

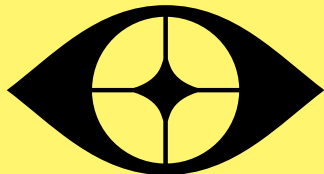
**SEPTEMBER -  
DECEMBER**



**2026 PLAN**

**PREVIS ARTIST**

**RUFUS RIGBY**

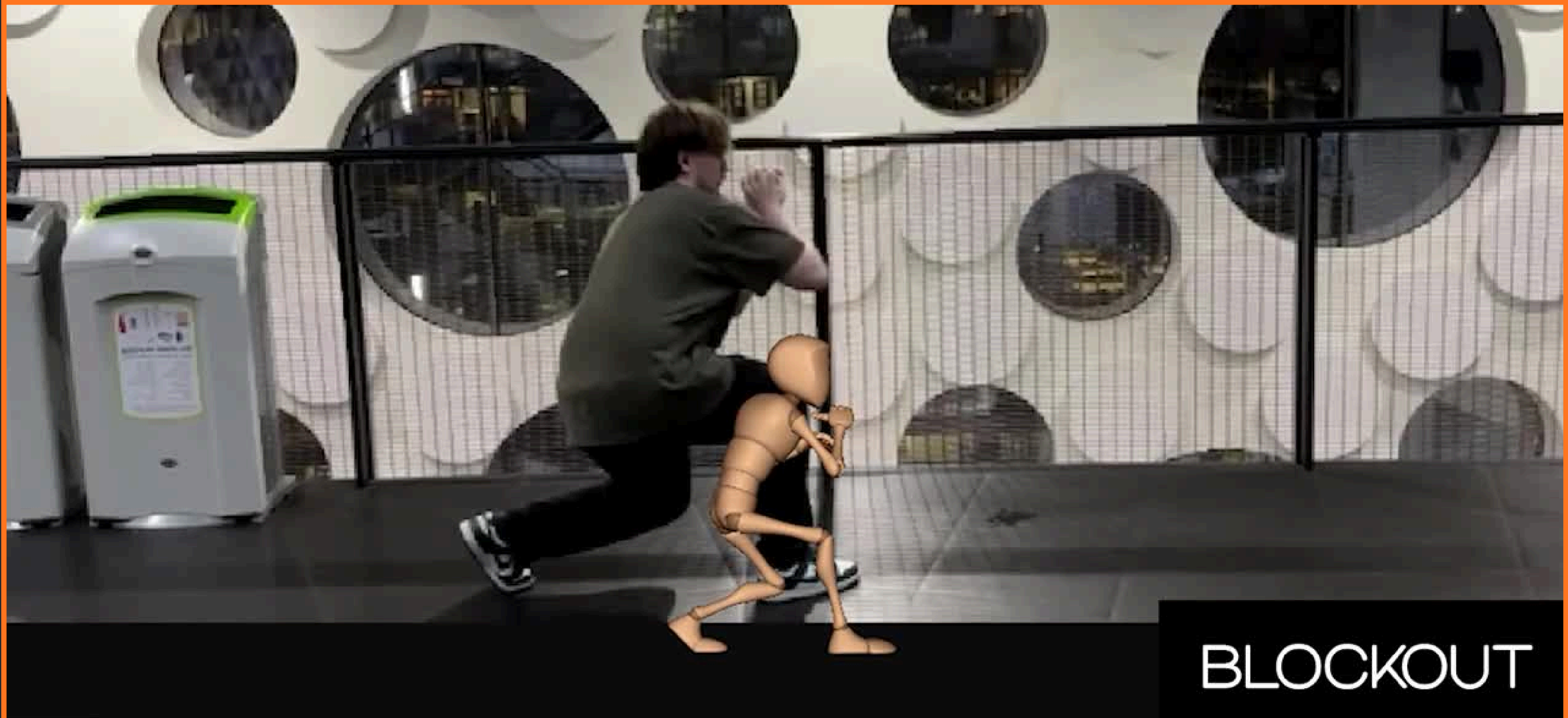


# CURRENT PROJECTS

BODY MECHANICS

180° TURN

PORTFOLIO



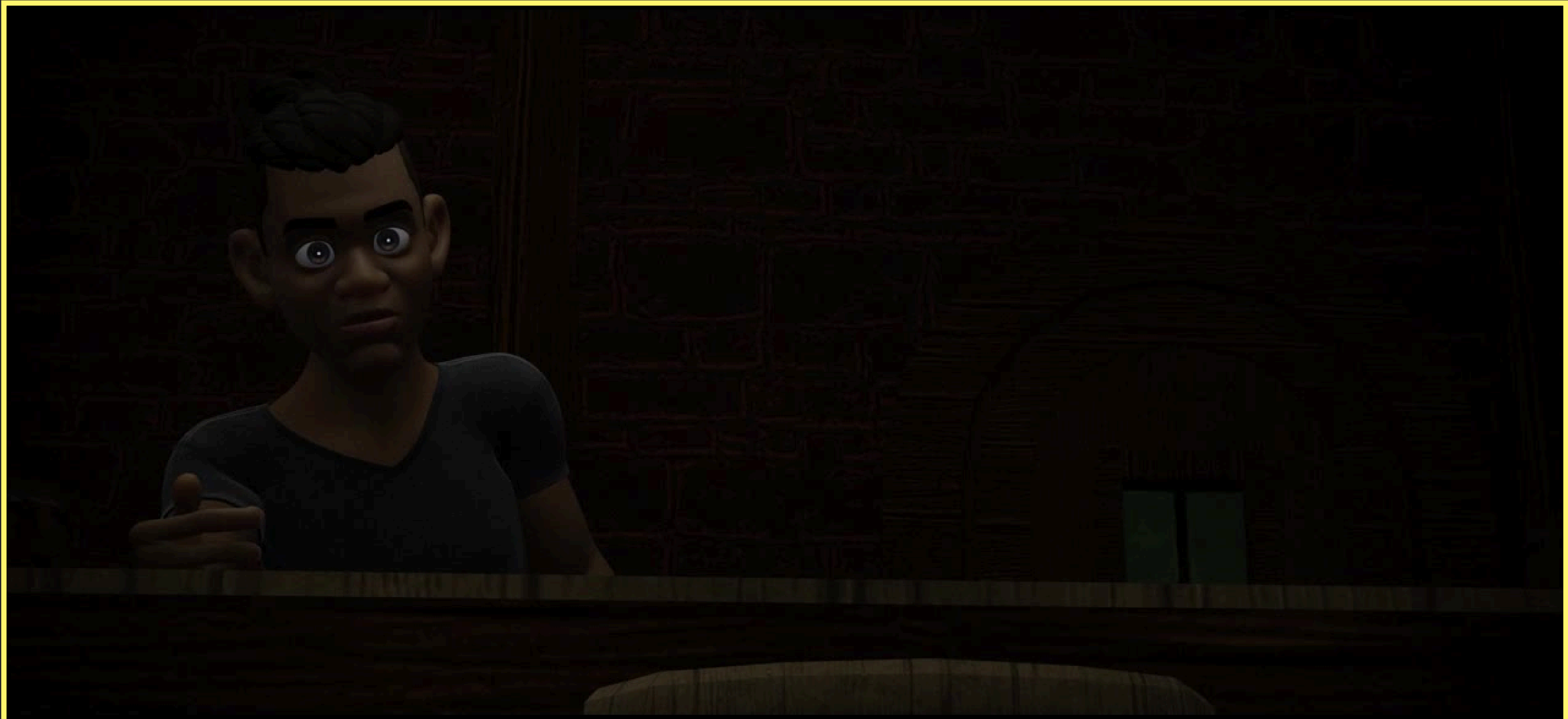
BLOCKOUT

# CURRENT PROJECTS

PREVIS

PORTFOLIO

PSYCHOLOGICAL HORROR



# CURRENT PROJECTS

PREVIS  
CAR CHASE

PORTFOLIO

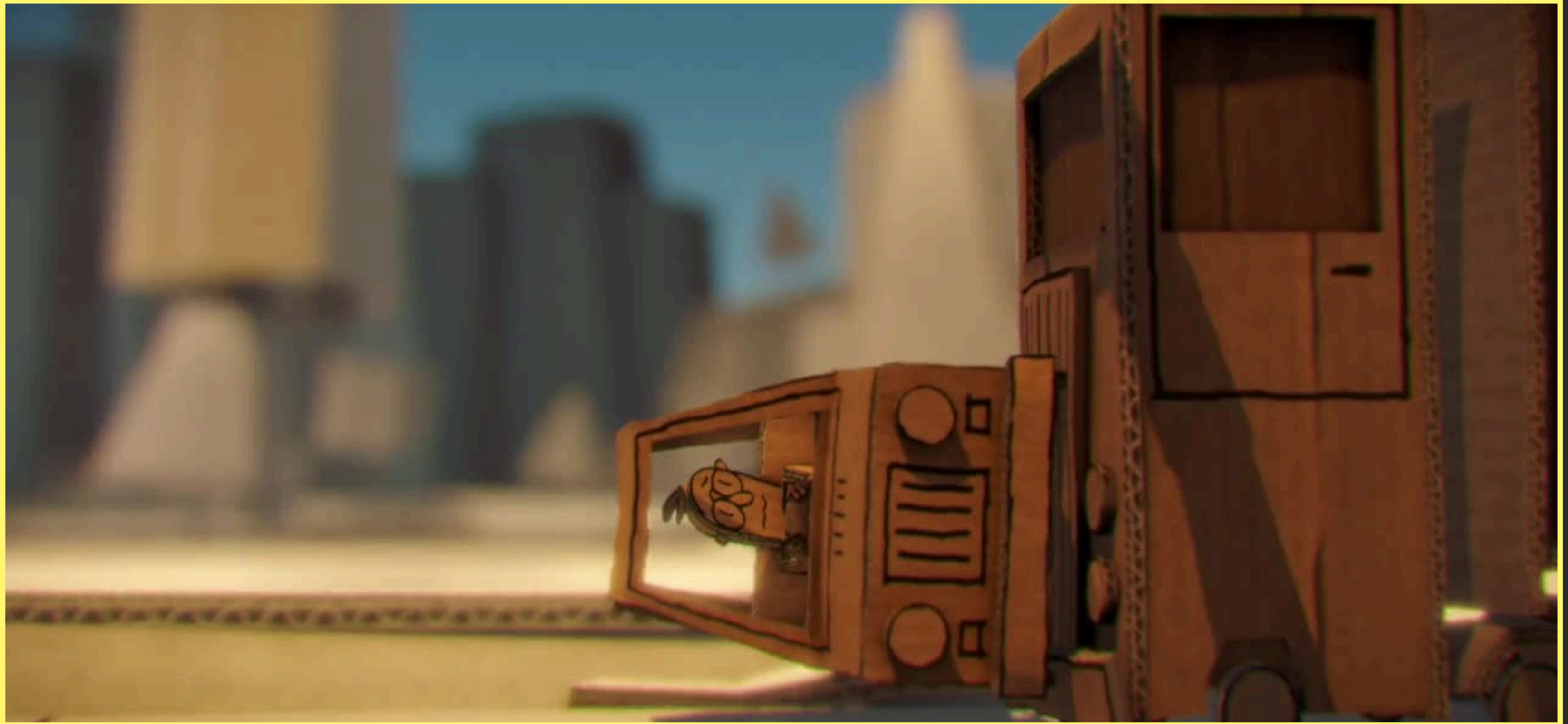


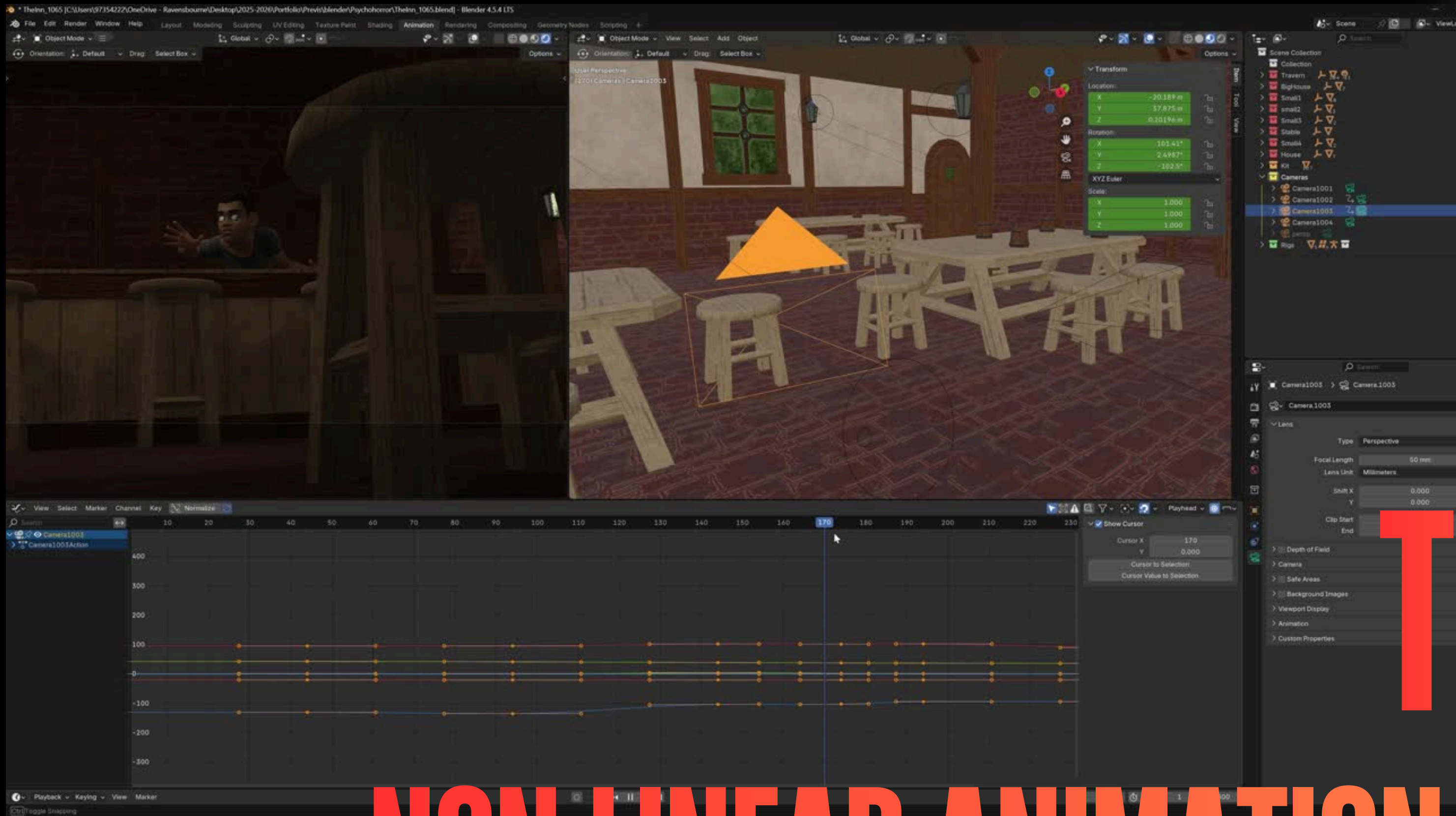


# CURRENT PROJECTS

PREVIS  
CAR CHASE

PORTFOLIO





# DEVELOPMENT TOOLS NON LINEAR ANIMATION EDITOR





DEVELOPMENT

TOOLS

TIN2TIN SCENE STRIP TOOLS

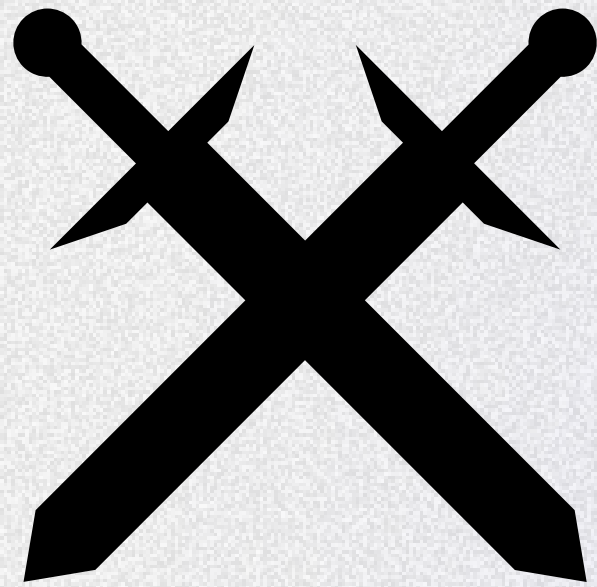
# PORTFOLIO

# TIME SHEET

Task	Prompt	Progress	Reference/Planning	Blocking	Spline	Polish	TOTAL TIME:
Body Mechanics	Create a180-degree turn to show weight,		6 days	3 days	7 days	21 days	5 weeks, 2 days
Previs	Psychological Horror – a resident investigates a		14 days	21 days	x	x	5 weeks
Previs	A car chase in a city		14 days	x	x	x	2 weeks







**PRODUCTION**

# ST. BRICE'S DAY



## **PREMISE**

A STYLISED ANIMATED SEQUENCE FOR AN EDUCATIVE SHORT-FORM HISTORY VIDEO, EXPLORING THE CULTURAL DEVASTATION THAT TOOK PLACE DURING THE DANISH MASSACRE IN ENGLAND C. 1002.

**(90-120 SECONDS)**

## **ROLES**

**MUSIC COMPOSER** – SAMUEL HUNTER

**NARRATOR** – RUFUS RIGBY

**CHARACTER RIGGER** (MAYA) – ???

**LIGHTING SUPERVISOR** – ???

# STORY BEATS



**01** ANGLO SAXONS AND DANES  
LIVING HARMONIOUSLY IN  
WESSEX



**02** KING ÆTHELRED II GIVES HIS  
COMMAND TO MASSACRE THE  
DANES



**03** ANGLO SAXONS MARCHING  
ACROSS THE COUNTRY  
BUTCHERING DANES



**04** DANISH POPULATION DECLINE IN  
MAJOR SETTLEMENTS ACROSS THE  
COUNTRY INCLUDING THE DANELAW



**05** DANISH RETALIATION CONSISTING  
OF LARGE SCALE INVASIONS LED  
BY KING SWEYN FORKBEARD

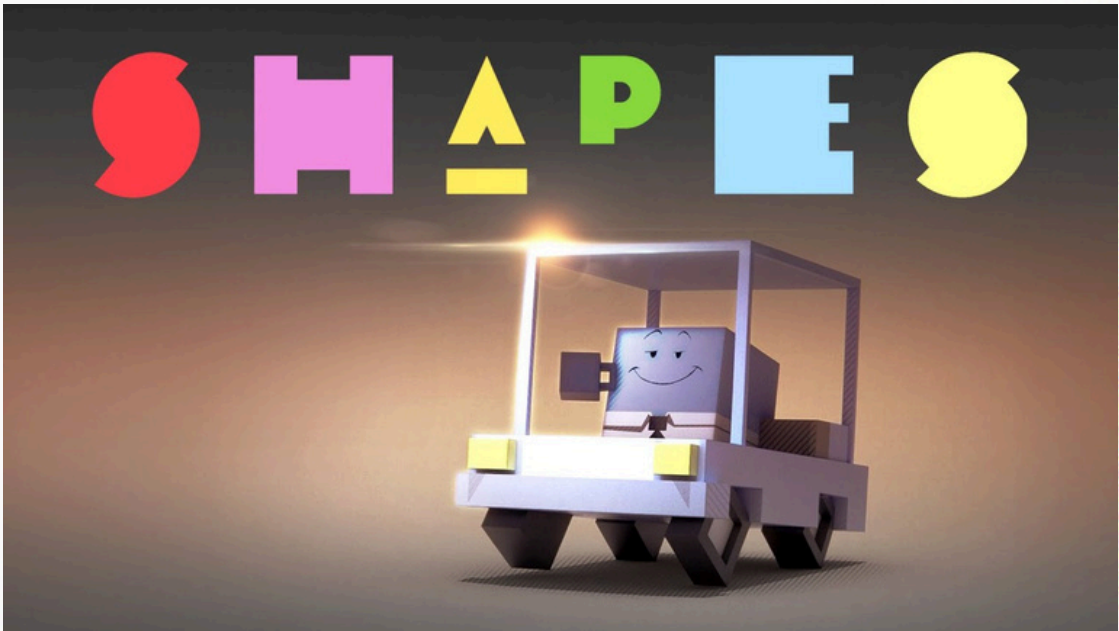
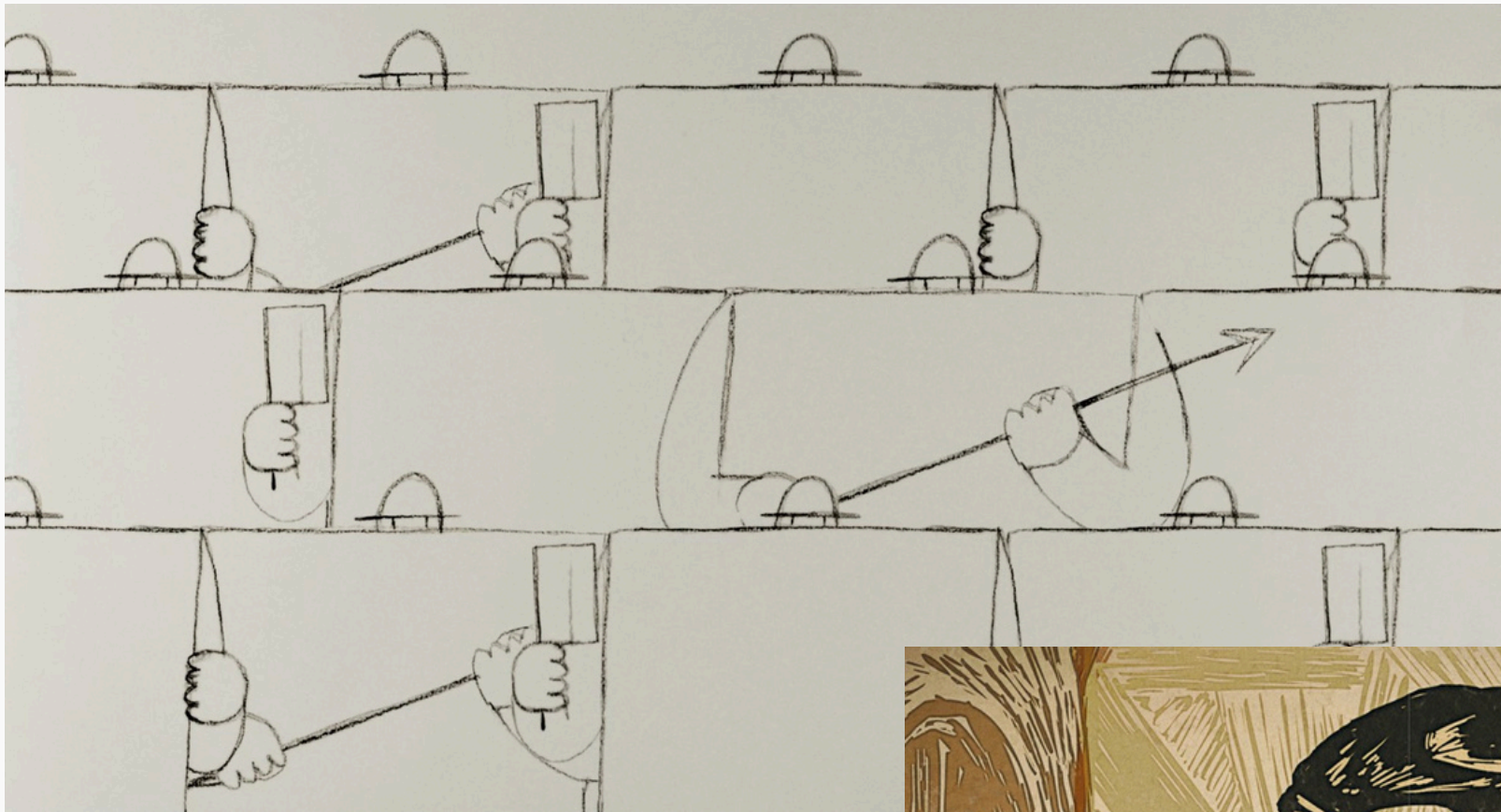


**06** KING ÆTHELRED II LOSES THE  
CROWN AND FLEES TO  
NORMANDY

## PRODUCTION



PRODUCTION







**THANK YOU**