

# ST. BRICCE'S DAY

17/01/26 - 23/04/26

**Concept document**

[]

# TABLE OF CONTENTS

**I. MOODBOARDS**

**II. STORY BEATS**

**III. STORYBOARDS**

**IV. SCRIPT**

**V. CHARACTER DESIGN**

**VI. SHOT LIST**

**VII. MUSIC**

**VIII. FIRST SHOT**

# RUFUS'S TASKS

Story beats (100% done)

Shot list (100% done)

Moodboards (95% done)

Script (95% done)

Storyboards (20% done)

Concept document

17/01/26 - 23/04/26

# CHARACTER MOODBOARD #1 THE DANES

upper class

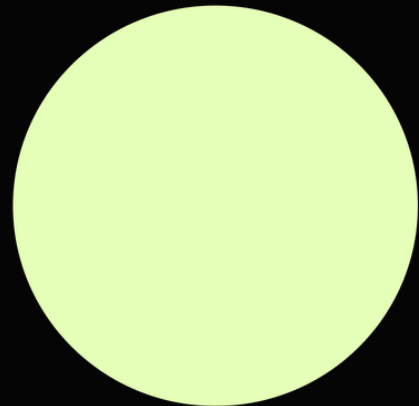
nobility



danish warrior



© Cornell Arts



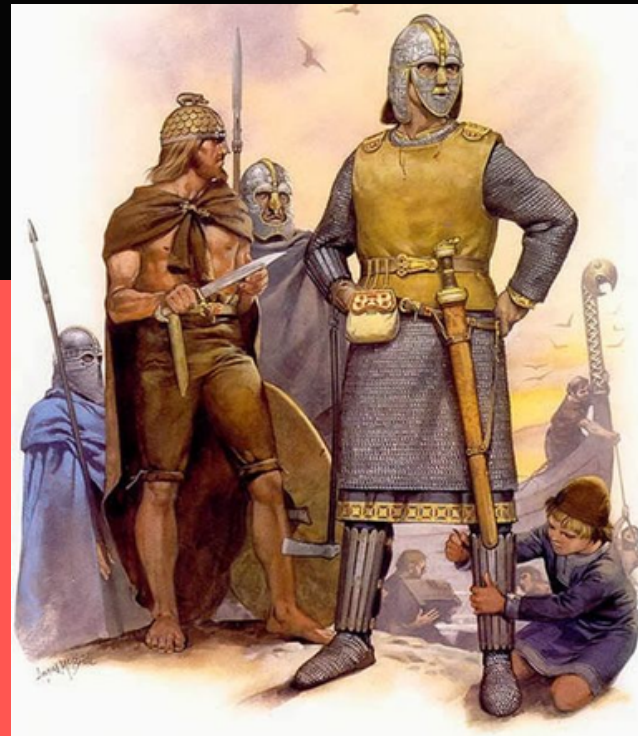
Concept document

17/01/26 - 23/04/26

# CHARACTER MOODBOARD #2 THE ANGLO-SAXONS

anglo-saxon soldiers

11th century anglo-saxons



Concept document

17/01/26 - 23/04/26

# CHARACTER MOODBOARD #3 KING AETHELRED THE UNREADY

depiction 1220

earliest symbolism 997-1009

1003-1009

997-1003



Concept document

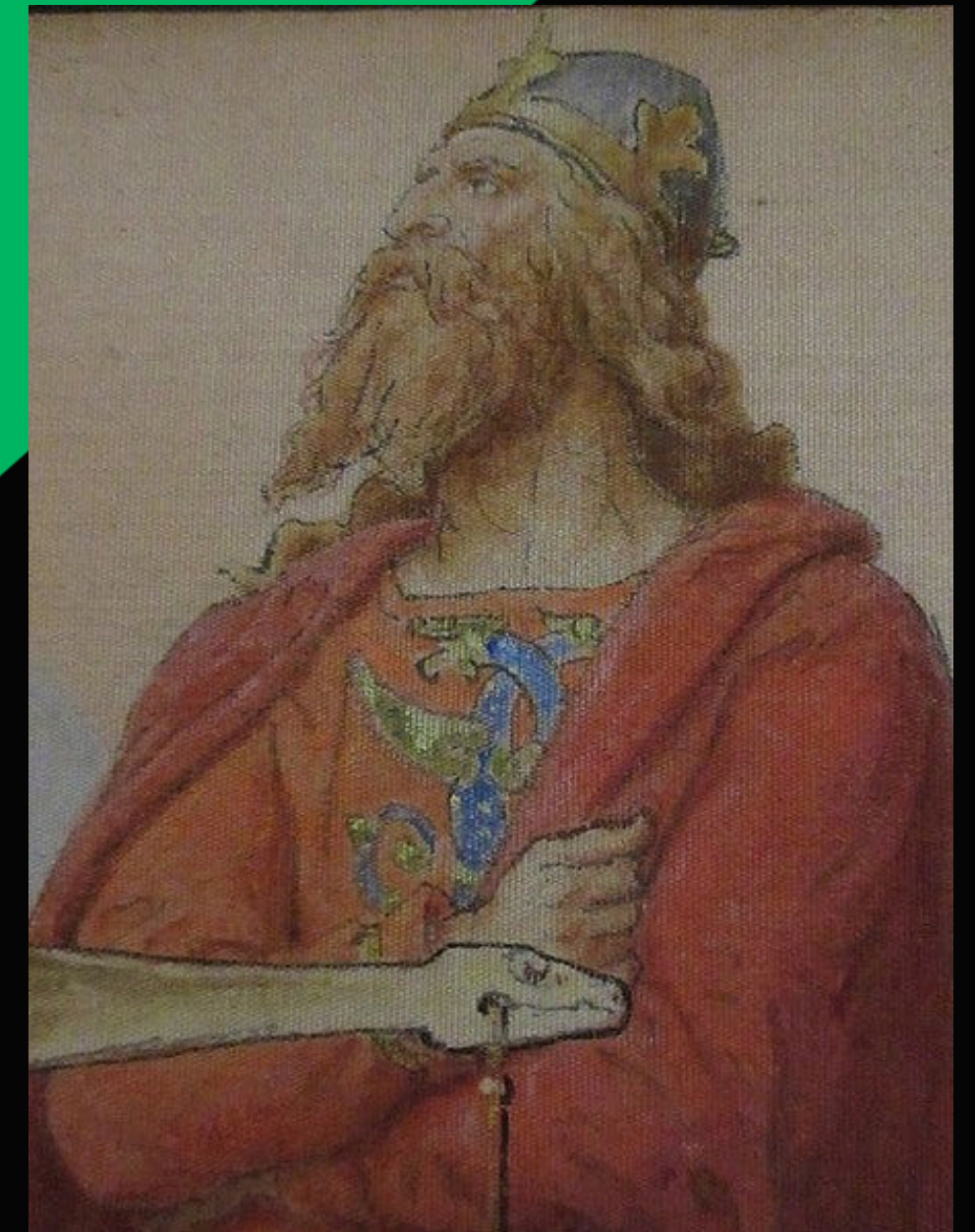
17/01/26 - 23/04/26

# CHARACTER MOODBOARD#4 KINGSWEYN FORKBEARD

recent depiction

earliest artistic depiction  
approx. 1250-1259

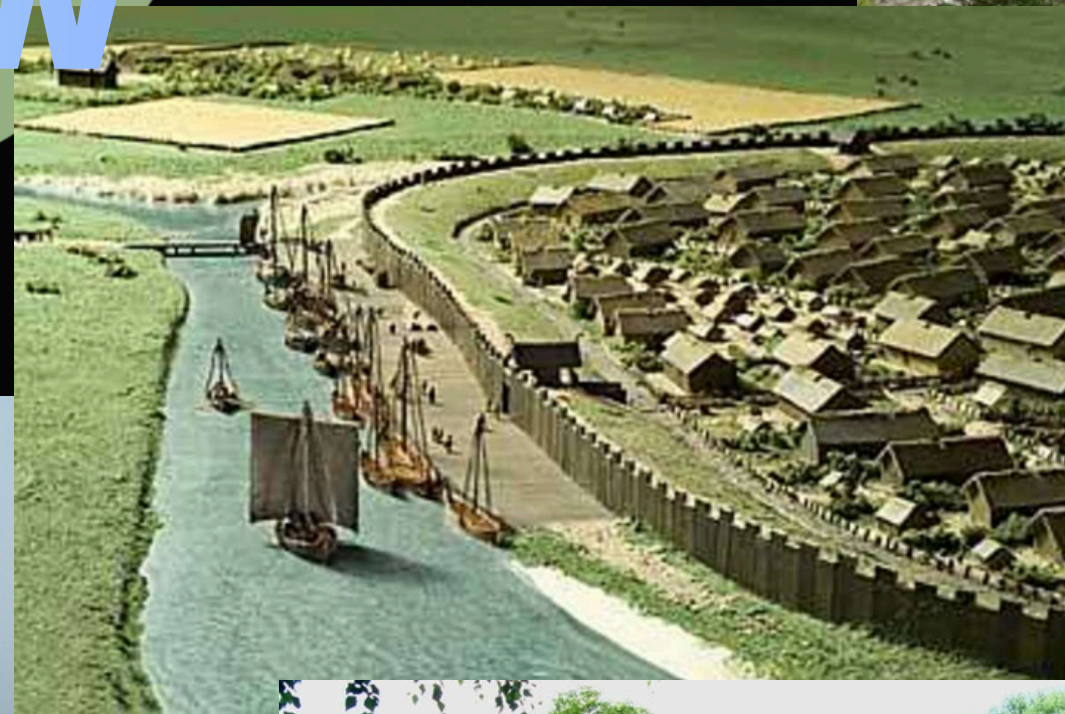
danish silver coins printed approx. 995



Concept document

# LOCATION MOODBOARD #1 THE DANIELAW

17/01/26 - 23/04/26



Concept document

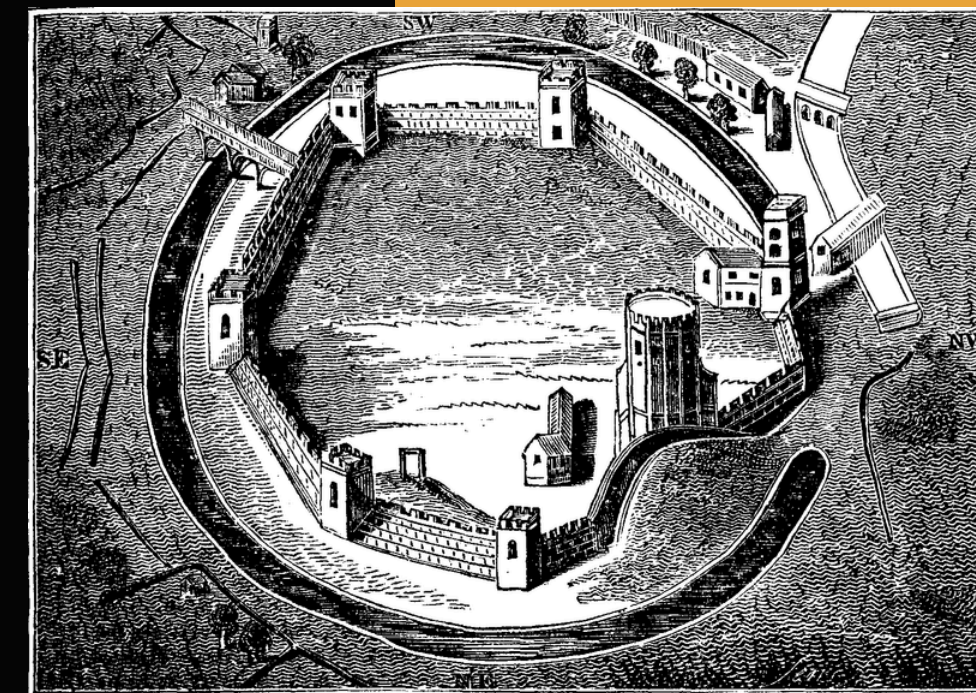
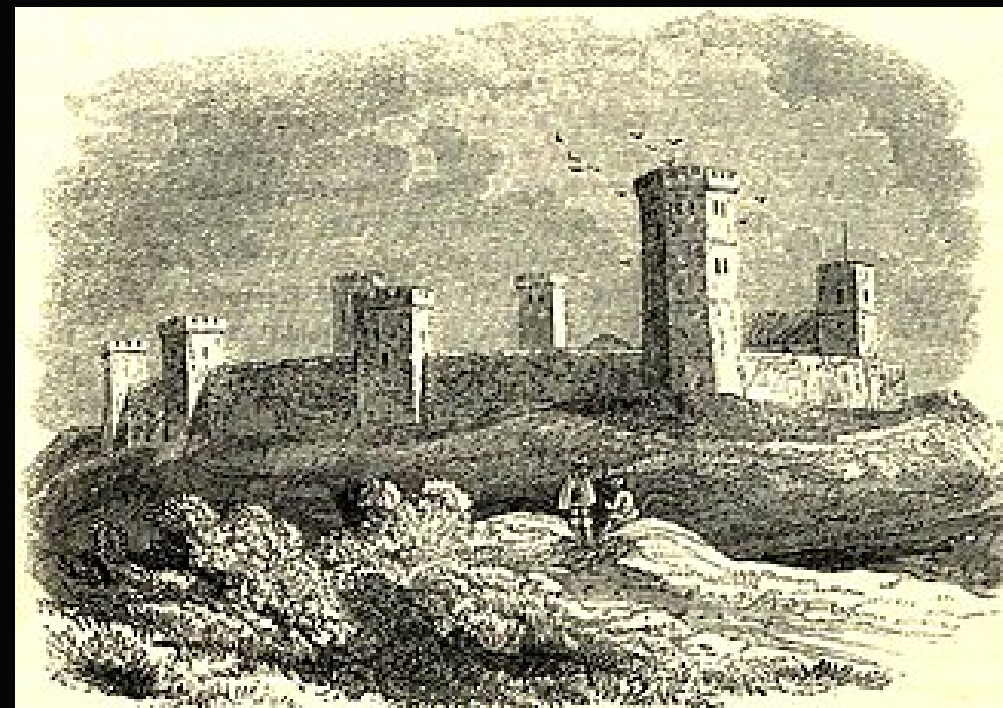
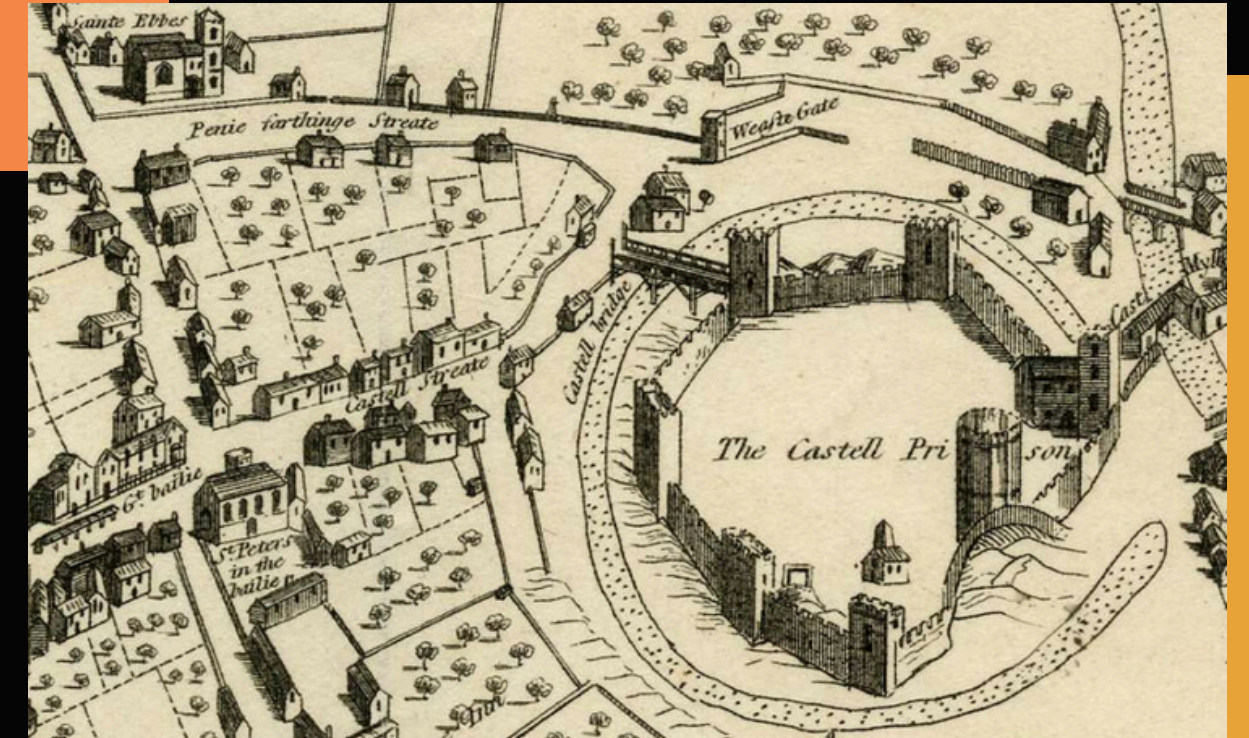
17/01/26 - 23/04/26

# LOCATION MOODBOARD #2 OXFORD

oxford castle & prison

st. frideswides church (now  
christ church cathedral)

set fire during the massacre



# STORY BEATS

**01** ANGLO SAXONS AND DANES CO-EXISTING IN WESSEX



**02** KING ÆTHELRED II GIVES HIS COMMAND TO MASSACRE THE DANES



**03** ANGLO SAXONS MARCHING ACROSS THE COUNTRY SLAYING DANES AND BURNING SETTLEMENTS



**04** DANISH POPULATION DECLINE IN MAJOR SETTLEMENTS ACROSS THE COUNTRY INCLUDING THE DANELAW



**05** DANISH RETALIATION CONSISTING OF LARGE SCALE INVASIONS LED BY KING SWEYN FORKBEARD



**06** KING ÆTHELRED II LOSES THE CROWN AND FLEES TO NORMANDY

# STORYBOARD #1

TITLE: St. Brice's Day Major Beats 1-2 PAGE: 1



Anglo Saxon riding through town on a wagon, greeting Danes.



The Dane waves to the Anglo Saxon. The Anglo Saxon waves back.



A Danish blacksmith working hard on a new sword, Anglo Saxon rides past



The Anglo Saxon dismounts and meets the blacksmith



The Anglo Saxon asks the blacksmith to purchase a sword

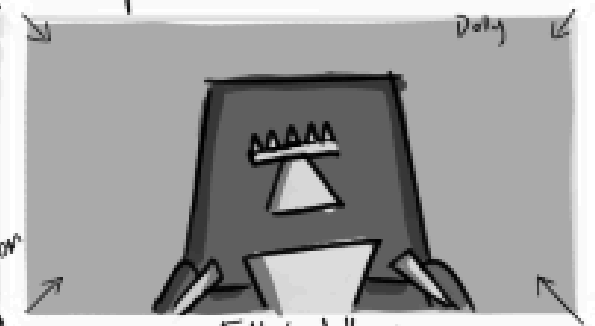


The two complete the exchange positively.

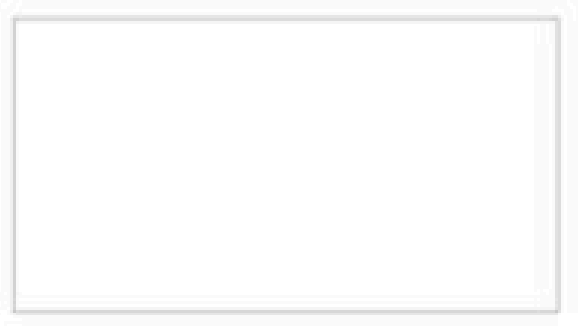
TITLE: St. Brice's Day Major Beats 1-2 PAGE: 2

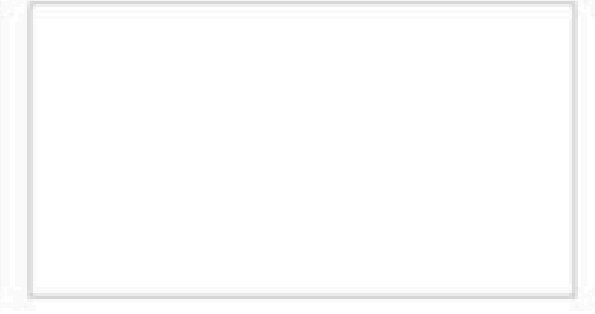
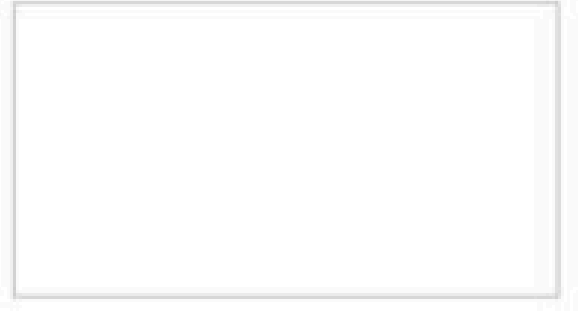


Zoom out to map of England 1002. Areas of interest: Winchester, Oxford, The Danelaw



Duty in an Ethelred II sitting at his throne in Winchester.



# SCRIPT



<p>St Brice's Day Written by Rufus Rigby</p> <p>Based on the events of the St. Brice's Day Massacre C. 1002</p>	<p>EXT. WINCHESTER, WESSEX - DAY</p> <p>It's a morning of celebration in the Wessex capital, Winchester. Townspeople are seen wandering down the street conversing with one another. Primarily Anglo Saxons but Danes are also present. The people seem to be cheerful of the celebrations today, everyone's in good spirits.</p> <p>NARRATOR</p> <p>It's the 13th November, 1002. Today is St. Brice's Day, a feast day dedicated to the commemoration of Saint Brice, a Christian saint who lived in the 5th century until 444.</p> <p>A wagon is being pulled through the town by horse, driven by an Anglo Saxon. As he rides through the town, people recognise him and wave happily at him, Danes included. Seems to be a popular man around these parts.</p> <p>NARRATOR (CONT'D)</p> <p>Across England, Danes and Anglo Saxons are beginning to coexist. Although it's a Christian day of feast, and the Danes aren't all Christian, all seems well between the two peoples living here in Winchester, Wessex.</p> <p>The WAGON DRIVER passes by the local Danish BLACKSMITH, pauses for a moment and halts the wagon outside his shop. He dismounts his horse and approaches the blacksmith. The two greet each other, before the wagon driver gestures a request for a sword. The blacksmith happily obliges and presents him with what he's asked for. The wagon driver pulls a sack of coin from his belt and exchanges it with the blacksmith for the sword, before returning to his horse.</p> <p>NARRATOR (CONT'D)</p> <p>Some, however, are not so faithful in the trust that's been built. Precautions have to be made.</p> <p>ZOOM OUT TO MAP OF ENGLAND</p> <p>ZOOM IN ON THE DANELAW</p> <p>CUT TO:</p> <p>EXT. THE DANELAW - DAY</p> <p>Danes only. They live a simpler life here, more in accordance</p>	<p>2.</p> <p>with their Viking traditions. Round huts with thatched roofs, wooden spokes surrounding the village.</p> <p>NARRATOR</p> <p>A large partition of the country has previously been allocated to the Danes by King Alfred The Great following a treaty with Viking King, Guthrum of East Anglia. Within the Eastern regions of England and some areas of the North, Danes live in a realm known as the Danelaw. There are farmers growing their own crops, traders selling their wares, everyone seems to be getting on with their lives, while the warriors are preparing their warships.</p> <p>ZOOM OUT TO MAP OF ENGLAND</p> <p>ZOOM IN TO OXFORD</p> <p>CUT TO:</p> <p>INT. HEADINGTON PALACE, OXFORDSHIRE - DAY</p> <p>NARRATOR</p> <p>As tensions are rising with the Anglo Saxons living in Wessex and Danes living in the Danelaw, rumour has it that King Ethelred II is going about his business as King at his royal palace in Headington, near Oxford.</p> <p>ETHELRED sits at his throne in the dark, shielded from outdoor light. A messenger bursts in, half illuminating the King.</p> <p>NARRATOR (CONT'D)</p> <p>It's at this point that King Ethelred hears word that the Danes in the east of the country are appearing to prepare their men for more raids. The Danish Ealdorman of Devonshire, Pallig Tokesen has already pledged his allegiance to King Ethelred, however, he has now defected to join the Viking raids. As well as these rising tensions in the East of the country, history has it that Ethelred is warned of an assassination plot by Danish</p> <p>(MORE)</p>	<p>3.</p> <p>NARRATOR (CONT'D)</p> <p>settlers in Oxford, a disputed territory between the borders of Mercia, Wessex and the Danelaw. Disregarding the peace that has been brokered with Danish settlers in Wessex, along with a personal prejudice against the Danes, Ethelred takes little time to act on his counsel and orders that on this day, all Danish settlers living in England shall be killed.</p> <p>KING ETHELRED II</p> <p>They are but cockle among the wheat and as such, must be destroyed.</p> <p>The messenger flees the room and spreads the orders.</p> <p>ZOOM OUT TO MAP OF ENGLAND</p> <p>We see visual data cues displaying the level of unrest beginning to occur across Oxford, with some Danish settlements in Devon appearing to react to the news.</p> <p>NARRATOR</p> <p>The orders became localised within Oxford, and news travels fast to Tokesen. History predicts that Tokesen was in Devonshire at the time he is informed that his wife, Gunhilde, sister of King Sweyn Forkbeard is being held hostage by Ethelred. To Tokesen, the worst has begun.</p> <p>CUT TO:</p> <p>EXT. ST FRIDESWIDE'S CHURCH, OXFORD - DAY</p> <p>Anglo Saxon soldiers march across Oxford with Gunhilde held captive. They reach a hillside where St Frideswide's Church is in view, before charging in.</p> <p>NARRATOR</p> <p>Ethelred's nationwide orders commanded Anglo Saxon soldiers in Oxford to enact the killings immediately. They then storm St Frideswide's Church, where a group of Danish settlers were reportedly hiding from the chaos.</p>	<p>4.</p> <p>CUT TO:</p> <p>INT. ST FRIDESWIDE'S CHURCH, OXFORD - DAY</p> <p>The Anglo Saxons kick down the door to the church and find a group of 35-37 male Danish settlers cowering in fear. A soldier throws Gunhilde inside and bolts the door shut before setting the place ablaze with them all inside.</p> <p>CUT TO:</p> <p>EXT. ST FRIDESWIDE'S CHURCH, OXFORD - DAY</p> <p>The Anglo Saxons stage a perimeter around the church while it becomes engulfed in flames.</p> <p>NARRATOR</p> <p>It's not known if Gunhilde was among the victims of the fire that burnt down St Frideswide's Church, however, according to sources, she was among the casualties during the attacks that day. Although this was likely Ethelred's own orders, this does not pan out well for the English king.</p> <p>ZOOM OUT TO MAP OF ENGLAND</p> <p>Danish population begins to dwindle, first in Oxford, then later more Danes begin to flee from Devonshire and the Danelaw.</p> <p>NARRATOR (CONT'D)</p> <p>As the massacre continues across the country, a handful of Danish settlers and mercenaries flee to Denmark with the news. At least two months later, King Sweyn Forkbeard is informed of the massacre and the tragic loss of his sister, Gunhilde. Sweyn, who had no interest of peaceful relations with the English beforehand, having raided England in the 990s and accomplished a raid on London in 994, had now become furious with the news he had realised and orders a full scale retaliation on the English for what Ethelred had done.</p> <p>ZOOM IN ON EAST ANGLIA/THE DANELAW</p>	<p>5.</p> <p>In 1003, Sweyn had ordered immediate campaigns to devastate areas in East Anglia and to have Norwich burnt to the ground. In the years that came, Sweyn ordered persistent raids on England between the years of 1007-1012, finally deploying his fleet in Sandwich in 1013, advancing his army north, forcing Ethelred to flee to Normandy.</p> <p>ZOOM OUT TO MAP OF ENGLAND AND FRANCE</p> <p>On Christmas day in 1013, Sweyn is crowned the first Danish king of England before shortly passing away on the 3rd February 1014.</p>
---	--	---	--	--	---

**ACT 1**  
**(BEATS 1+2)**

**ACT 2**  
**(BEATS 3+4)**

**ACT 3**  
**(BEATS 5+6)**

St Brice's Day

Written by

Rufus Rigby

Based on the events of the St. Brice's Day Massacre C.  
1002

# ACT 1

(BEATS 1+2)

# ACT 2

(BEATS 3+4)

# ACT 3

(BEATS 5+6)

EXT. WINCHESTER, WESSEX - DAY

It's a morning of celebration in the Wessex capital, Winchester. Townspeople are seen wandering down the street conversing with one another. Primarily Anglo Saxons but Danes are also present. The people seem to be cheerful of the celebrations today, everyone's in good spirits.

NARRATOR

It's the 13th November, 1002. Today is St. Brice's Day, a feast day dedicated to the commemoration of Saint Brice, a Christian saint who lived in the 5th century until 444.

A wagon is being pulled through the town by horse, driven by an Anglo Saxon. As he rides through the town, people recognise him and wave happily at him, Danes included. Seems to be a popular man around these parts.

NARRATOR (CONT'D)

Across England, Danes and Anglo Saxons are beginning to coexist. Although it's a Christian day of feast, and the Danes aren't all Christian, all seems well between the two peoples living here in Winchester, Wessex.

The WAGON DRIVER passes by the local Danish BLACKSMITH, pauses for a moment and halts the wagon outside his shop. He dismounts his horse and approaches the blacksmith. The two greet each other, before the wagon driver gestures a request for a sword. The blacksmith happily obliges and presents him with what he's asked for. The wagon driver pulls a sack of coin from his belt and exchanges it with the blacksmith for the sword, before returning to his horse.

NARRATOR (CONT'D)

Some, however, are not so faithful in the trust that's been built. Precautions have to be made.

ZOOM OUT TO MAP OF ENGLAND

ZOOM IN ON THE DANELAW

CUT TO:

EXT. THE DANELAW - DAY

Danes only. They live a simpler life here, more in accordance

# ACT 1

(BEATS 1+2)

# ACT 2

(BEATS 3+4)

# ACT 3

(BEATS 5+6)

2.

with their Viking traditions. Round huts with thatched roofs, wooden spokes surrounding the village.

NARRATOR

A large partition of the country has previously been allocated to the Danes by King Alfred The Great following a treaty with Viking King, Guthrum of East Anglia. Within the Eastern regions of England and some areas of the North, Danes live in a realm known as the Danelaw. There are farmers growing their own crops, traders selling their wares, everyone seems to be getting on with their lives, while the warriors are preparing their warships.

ZOOM OUT TO MAP OF ENGLAND

ZOOM IN TO OXFORD

CUT TO:

INT. HEADINGTON PALACE, OXFORDSHIRE - DAY

NARRATOR

As tensions are rising with the Anglo Saxons living in Wessex and Danes living in the Danelaw, rumour has it that King Æthelred II is going about his business as King at his royal palace in Headington, near Oxford.

ÆTHELRED sits at his throne in the dark, shielded from outdoor light. A messenger bursts in, half illuminating the King.

NARRATOR (CONT'D)

It's at this point that King Æthelred hears word that the Danes in the east of the country are appearing to prepare their men for more raids. The Danish Ealdorman of Devonshire, Pallig Tokesen has already pledged his allegiance to King Æthelred, however, he has now defected to join the Viking raids. As well as these rising tensions in the East of the country, history has it that Æthelred is warned of an assassination plot by Danish

(MORE)

# ACT 1

(BEATS 1+2)

# ACT 2

(BEATS 3+4)

# ACT 3

(BEATS 5+6)

3.

NARRATOR (CONT'D)  
settlers in Oxford, a disputed territory between the borders of Mercia, Wessex and the Danelaw. Disregarding the peace that has been brokered with Danish settlers in Wessex, along with a personal prejudice against the Danes, Æthelred takes little time to act on his counsel and orders that on this day, all Danish settlers living in England shall be killed.

KING ÆTHELRED II  
They are but cockle among the wheat and as such, must be destroyed.

The messenger flees the room and spreads the orders.

ZOOM OUT TO MAP OF ENGLAND

We see visual data cues displaying the level of unrest beginning to occur across Oxford, with some Danish settlements in Devon appearing to react to the news.

NARRATOR  
The orders became localised within Oxford, and news travels fast to Tokesen. History predicts that Tokesen was in Devonshire at the time he is informed that his wife, Gunhilde, sister of King Sweyn Forkbeard is being held hostage by Æthelred. To Tokesen, the worst has begun.

CUT TO:

EXT. ST FRIDESWIDE'S CHURCH, OXFORD - DAY

Anglo Saxon soldiers march across Oxford with Gunhilde held captive. They reach a hillside where St Frideswide's Church is in view, before charging in.

NARRATOR  
Æthelred's nationwide orders commanded Anglo Saxon soldiers in Oxford to enact the killings immediately. They then storm St Frideswide's Church, where a group of Danish settlers were reportedly hiding from the chaos.

# ACT 1

(BEATS 1+2)

# ACT 2

(BEATS 3+4)

# ACT 3

(BEATS 5+6)

4.

CUT TO:

INT. ST FRIDESWIDE'S CHURCH, OXFORD - DAY

The Anglo Saxons kick down the door to the church and find a group of 35-37 male Danish settlers cowering in fear. A soldier throws Gunhilde inside and bolts the door shut before setting the place ablaze with them all inside.

CUT TO:

EXT. ST FRIDESWIDE'S CHURCH, OXFORD - DAY

The Anglo Saxons stage a perimeter around the church while it becomes engulfed in flames.

NARRATOR

It's not known if Gunhilde was among the victims of the fire that burnt down St Frideswide's Church, however, according to sources, she was among the casualties during the attacks that day. Although this was likely Æthelred's own orders, this does not pan out well for the English king.

ZOOM OUT TO MAP OF ENGLAND

Danish population begins to dwindle, first in Oxford, then later more Danes begin to flee from Devonshire and the Danelaw.

NARRATOR (CONT'D)

As the massacre continues across the country, a handful of Danish settlers and mercenaries flee to Denmark with the news. At least two months later, King Sweyn Forkbeard is informed of the massacre and the tragic loss of his sister, Gunhilde. Sweyn, who had no interest of peaceful relations with the English beforehand, having raided England in the 990s and accomplished a raid on London in 994, had now become furious with the news he had realised and orders a full scale retaliation on the English for what Æthelred had done.

ZOOM IN ON EAST ANGLIA/THE DANELAW

# ACT 1

(BEATS 1+2)

# ACT 2

(BEATS 3+4)

# ACT 3

(BEATS 5+6)

5.

In 1003, Sweyn had ordered immediate campaigns to devastate areas in East Anglia and to have Norwich burnt to the ground. In the years that came, Sweyn ordered persistent raids on England between the years of 1007-1012, finally deploying his fleet in Sandwich in 1013, advancing his army north, forcing Æthelred to flee to Normandy.

ZOOM OUT TO MAP OF ENGLAND AND FRANCE

On Christmas day in 1013, Sweyn is crowned the first Danish king of England before shortly passing away on the 3rd February 1014.

SHOT LIST (current runtime estimate 285s / 4m 45s)

Shot number	Shot type	Lens info	Subject	Duration	Transition	Description	Audio	Dialogue	Highest Priority (TOTAL: 209s)	Medium Priority (TOTAL: 47s)	Lowest Priority (TOTAL: 29s)
10201	Medium close up	700	Wagon driver	15s	Cut to	Front view of the wagon driver's face as he looks out the window.	None	None	X		
10202	Medium close up	700	Wagon driver	15s	Cut to	Front view of the wagon driver's face as he looks out the window.	None	None	X		
10301	Full shot, wide angle	700	Blacksmith's	4s	Cut to	Blacksmith's hammering on an anvil.	None	None	X		
10302	Medium close up	700	Blacksmith's	4s	Cut to	Blacksmith's hammering on an anvil.	None	None	X		
10401	Over the shoulder	700	Blacksmith's	4s	Cut to	Blacksmith's hammering on an anvil.	None	None	X		
10501	Full shot, mid low angle	700	Wagon driver	5s	Cut to	Wagon driver looking out the window.	None	None		X	
10601	Full shot	700	Wagon driver + 7s Blacksmith's	7s	Cut to	Wagon driver and Blacksmith's.	None	None	X		
10701	Close up	700	Wagon driver's face	5s	Cut to	Wagon driver's face.	None	None	X		
10801	Over the shoulder	700	The Doctor	15s	Cut to	The Doctor's face.	None	None			X
10901	Extreme wide angle shot	700	The Doctor	15s	Cut to	The Doctor's face.	None	None	X		
11001	Wide angle shot	700	Spanish horses	2s	Cut to	Spanish horses.	None	None	X		
11101	Medium close up	700	Spanish horses	2s	Cut to	Spanish horses.	None	None			X
11201	Wide angle shot	700	Spanish horses	2s	Cut to	Spanish horses.	None	None	X		
20101	Establishing shot	700	Wagon driver	5s	Cut to	Wagon driver.	None	None	X		
20201	Low angle	700	King Edward	5s	Cut to	King Edward.	None	None	X		
20301	Full shot	700	Message	2s	Cut to	Message.	None	None			X
20401	Close up	700	King Edward	5s	Cut to	King Edward.	None	None	X		
20501	Medium close up	700	King Edward	15s	Cut to	King Edward.	None	None	X		
20402	Close up	700	Message	5s	Cut to	Message.	None	None		X	
20502	Medium close up	700	King Edward	5s	Cut to	King Edward.	None	None			X
20601	Wide angle shot	700	King Edward	5s	Cut to	King Edward.	None	None	X		
20602	Close up	700	King Edward	5s	Cut to	King Edward.	None	None			X
20603	Low angle	700	King Edward	5s	Cut to	King Edward.	None	None			X
20701	Over the shoulder	700	Orator	15s	Cut to	Orator.	None	None			X
20801	Full shot, high angle	700	Field	15s	Cut to	Field.	None	None	X		
20901	Close up	700	Letter	5s	Cut to	Letter.	None	None		X	
21001	Close up	700	Sign	5s	Cut to	Sign.	None	None		X	
21101	Extreme wide angle shot	700	Anglo-Saxon	5s	Cut to	Anglo-Saxon.	None	None	X		
21201	Medium close up	700	Anglo-Saxon	15s	Cut to	Anglo-Saxon.	None	None	X		
21301	Medium close up	700	Anglo-Saxon	5s	Cut to	Anglo-Saxon.	None	None		X	
21401	High angle shot	700	Church	4s	Cut to	Church.	None	None			X
21501	Medium close up	700	Anglo-Saxon	15s	Cut to	Anglo-Saxon.	None	None			X
20503	Medium close up	700	King Edward	5s	Cut to	King Edward.	None	None	X		
30101	Medium close up	700	Orator	15s	Cut to	Orator.	None	None	X		
30201	High angle	700	Sign	15s	Cut to	Sign.	None	None	X		
30301	Low angle	700	Sign	15s	Cut to	Sign.	None	None	X		
30401	High angle	700	Sign	15s	Cut to	Sign.	None	None			X
30501	Low angle	700	Sign	15s	Cut to	Sign.	None	None	X		
30601	Establishing shot	700	Sign	15s	Cut to	Sign.	None	None	X		
30701	Medium close up	700	Sign	15s	Cut to	Sign.	None	None	X		

**SHOT LIST ( current runtime estimate 285s / 4m 45s )**

Shot number	Shot type	Lens info	Subject	Duration	Transition	Description	Audio	Dialogue	Highest Priority (TOTAL: 209s)	Medium Priority (TOTAL: 47s)	Lowest Priority (TOTAL: 29s)
<b>10101</b>	Master shot, extreme wide angle	TBD	Set piece	10s	Fade from black, Cut to	Primary coverage of the piece, capturing each story beat with miniature look. Opening with a flyover to the set piece sitting on a shelf.	Mechanical noises starting up, cogs turning, gears churning		<b>X</b>		
<b>10201</b>	Medium shot	TBD	Wagon driver	15s	Cut to	Tracking with the wagon driver's side profile against a backdrop of Wessex, using a parallaxing effect with the visual planes.	Horse trotting, wagon moving, subtle background murmuring from members of the public	"It's the 13th November, 1002. Today is St. Brice's Day, a feast day dedicated to the commemoration of Saint Brice, a Christian saint who lived in the 5th century until 444.	<b>X</b>		
<b>10301</b>	Full shot, cutaway	TBD	Blacksmith's	4s	Cut to	Still of the Blacksmith's	Hammer hitting metal on an anvil	"Across England, Danes and Anglo Saxons are beginning to coexist [...]"	<b>X</b>		
<b>10202</b>	Medium close-up	TBD	Blacksmith	6s	Cut to	Subtle handheld framing the blacksmith hard at work. He turns to look outside	Hammer hitting metal on an anvil, stops.	"Although it's a Christian day of feast, and the Dane's aren't all Christian, [...]"	<b>X</b>		
<b>10401</b>	Over the shoulder	TBD	Blacksmith's	6s	Cut to	Shaky cam to emulate the bumpy road, blacksmith seen heading outside	Horse trotting, wagon moving, subtle background murmuring from members of the public	"All seems well between the two peoples living here in Winchester, Wessex."	<b>X</b>		
<b>10501</b>	Full shot, mid-low angle	TBD	Wagon driver	5s	Cut to	Wagon driver tugging the reins, horse coming to a halt	Horse and wagon slowing to a stop			<b>X</b>	
<b>10601</b>	Two shot	TBD	Wagon driver + Blacksmith	7s	Cut to	Still of the wagon driver stopping the wagon and dismounting the horse, heading toward the blacksmith	Sound of metal clanging getting gradually louder	"Some however, are not so faithful in the trust that's been built. [...]"	<b>X</b>		

**SHOT LIST ( current runtime estimate 285s / 4m 45s )**

Shot number	Shot type	Lens info	Subject	Duration	Transition	Description	Audio	Dialogue	Highest Priority (TOTAL: 209s)	Medium Priority (TOTAL: 47s)	Lowest Priority (TOTAL: 29s)
10701	Insert close-up, waist level	TBD	Wagon driver's hand + blacksmith's hand	5s	Cut to	Wagon driver exchanges sack of gold for a sword from the blacksmith	Sound of coins clinking and a sword being unsheathed	"Precautions have to be made"	<b>X</b>		
10801	Insert shot	TBD	The Danelaw	10s	Cut to	Map of England, focus on the Danelaw in the East		"A large partition of the country has previously been allocated to the Danes by King Alfred the Great following a treaty with the Viking King, Gurthrum of East Anglia. [...]"			<b>X</b>
10901	Extreme wide angle shot	TBD	The Danelaw	10s	Cut to	Danelaw village, viking settlement, houses, traders		"Within the Eastern regions of England and some areas of the North, Danes live in a realm known as the Danelaw. [...]"	<b>X</b>		
11001	Wide angle shot	TBD	Danish farmers	2a	Cut to	Farmers harvesting wheat from a field		"There are farmers growing their own crops, [...]"	<b>X</b>		
11101	Medium shot	TBD	Danish traders	2s	Cut to	Traders exchanging commodities with others		"traders selling their wares, [...]"			<b>X</b>
11102	Medium close-up	TBD	Danes	4s	Cut to	Happy people		"everyone seems to be getting on with their lives, [...]"			<b>X</b>
11201	Wide angle shot	TBD	Danish warriors	5s	Cut to	Danes setting sails on their warships		"while the warriors are preparing their warships."	<b>X</b>		
20101	Establishing shot	TBD	Headington Palace, Oxfordshire	5s	Cut to	Exterior shot of palace		"As tensions are rising with the Anglo Saxons living in Wessex and the Danes living in the Danelaw, [...]"	<b>X</b>		
20201	Low angle medium-close up shot	TBD	King Æthelred sitting on his throne	5s	Cut to	Dark lighting, camera orbiting Æthelred from behind, ending on his front in frame		"rumour has it that King Æthelred II is going about his business at his royal palace in Headington, near Oxford"	<b>X</b>		

## SHOT LIST ( current runtime estimate 285s / 4m 45s )

Shot number	Shot type	Lens info	Subject	Duration	Transition	Description	Audio	Dialogue	Highest Priority (TOTAL: 209s)	Medium Priority (TOTAL: 47s)	Lowest Priority (TOTAL: 29s)
20301	Full shot	TBD	Messenger bursting in	3s	Cut to	Light infiltrating the room, half illuminating the space					<b>X</b>
20401	Close-up two shot	TBD	King Æthelred	5s	Cut to	Messenger whispering into Æthelred's ear		"It's at this point that King Æthelred hears word that the Danes in the east of the country are appearing to prepare their men for more raids.	<b>X</b>		
20501	Medium shot	TBD	King Æthelred	10s	Cut to	Æthelred imagining the betrayal of his ealdorman, Pallig Tokesen		"The Danish Ealdorman of Devonshire, Pallig Tokesen, has already pledged his allegiance to King Æthelred, however, he has now defected to join the Viking raids. [...]"	<b>X</b>		
20402	Close-up two shot	TBD	Messenger	8s	Cut to	Messenger whispering into Æthelred's ear		"As well as these rising tensions in the east of the country, history has it that Æthelred is warned of an assassination plot by Danish settlers in Oxford. [...]"		<b>X</b>	
20502	Medium-close up shot	TBD	King Æthelred	5s	Cut to	King Æthelred getting angrier		"Disregarding the peace that has been brokered with Danish settlers in the country, along with a personal prejudice against the Danes, Æthelred takes little time to act on his counsel and orders that on this day, all Danish settlers living in England shall be killed."	<b>X</b>		

## SHOT LIST ( current runtime estimate 285s / 4m 45s )

Shot number	Shot type	Lens info	Subject	Duration	Transition	Description	Audio	Dialogue	Highest Priority (TOTAL: 209s)	Medium Priority (TOTAL: 47s)	Lowest Priority (TOTAL: 29s)
20601	Wide angle shot	TBD	King Æthelred	8s	Cut to	King Æthelred delivering the order	Large hall acoustics	"They are but cockle among the wheat and as such, must be destroyed."	X		
20602	Close up shot	TBD	King Æthelred	5s	Cut to	King Æthelred delivering the order	Large hall acoustics	"They are but cockle among the wheat and as such, must be destroyed."			
20202	Low angle medium-close up shot	TBD	King Æthelred	6s	Cut to	King Æthelred delivering the order	Large hall acoustics	"They are but cockle among the wheat and as such, must be destroyed."			
20701	Insert shot	TBD	Oxford	10s	Cut to	Map of England, focus on Oxford		"The orders became localised within Oxford, and news travels fast to Tokesen. [...]"			X
20801	Full shot, mid-high angle	TBD	Pallig Tokesen	10s	Cut to	Pallig receiving a letter		"History predicts that Tokesen was in Devonshire at the time he learns that his wife, Gunhilde, sister to King Sweyn Forkbeard is being held hostage by Æthelred. [...]"	X		
20901	Close up shot	TBD	Letter	5s	Cut to	Pallig dropping the letter		"For Tokesen, the worst has begun."		X	
21001	Close up shot	TBD	Soldiers' feet	3s	Cut to	Anglo Saxon soldiers marching through trees				X	
21101	Extreme wide angle shot	TBD	Anglo Saxon soldiers	5s	Cut to	Anglo Saxon soldiers marching through trees		"Æthelred's orders commanded his Anglo Saxon soldiers to enact the killings immediately. [...]"	X		
21201	Master shot, high + extreme wide angle	TBD	Anglo Saxon soldiers	10s	Cut to	Anglo Saxon soldiers infiltrating the village and entering the church		"They then storm St Frideswide's Church where a group of Danish settlers were reportedly hiding from the chaos."	X		

## SHOT LIST ( current runtime estimate 285s / 4m 45s )

Shot number	Shot type	Lens info	Subject	Duration	Transition	Description	Audio	Dialogue	Highest Priority (TOTAL: 209s)	Medium Priority (TOTAL: 47s)	Lowest Priority (TOTAL: 29s)
21301	Matched shot	TBD	Anglo Saxon soldiers	6s	Cut to	Anglo Saxon soldiers bursting into a dark space with torches				<b>X</b>	
21401	High angle shot	TBD	Gunhilde	4s	Cut to	Gunhilde being thrown in the room				<b>X</b>	
21202	Master shot, high + extreme wide angle	TBD	Anglo Saxon soldiers	10s	Cut to	Anglo Saxon soldiers setting the church on fire, leaving the place		"It's not known if Gunhilde was among the victims of the fire that burnt down St Frideswide's Church, however, according to history, we know she was among the casualties during the attacks that day. [...]"		<b>X</b>	
20503	Medium-close up shot	TBD	King Æthelred	5s	Cut to	Æthelred fiddling with his sword		"Although this was likely Æthelred's own orders, this does not pan out well for the English king."	<b>X</b>		
30101	Master shot, extreme wide angle	TBD	England	10s	Cut to	Danish population dwindling, Oxford, Devonshire, Danelaw			<b>X</b>		
30201	High + extreme wide angle	TBD	Danes	10s	Cut to	Danes boarding the warships	Viking horn blowing	"As the massacre continues across the country, a handful of Danish settlers and mercenaries flee to Denmark with the news. [...]"	<b>X</b>		
30301	Low + extreme wide angle	TBD	Danes	10s	Cut to	Danes arriving in Denmark	Music beginning to swell	"At least two months later, King Sweyn Forkbeard is informed of the massacre and the tragic loss of his sister, Gunhilde. [...]"	<b>X</b>		

**SHOT LIST ( current runtime estimate 285s / 4m 45s )**

Shot number	Shot type	Lens info	Subject	Duration	Transition	Description	Audio	Dialogue	Highest Priority (TOTAL: 209s)	Medium Priority (TOTAL: 47s)	Lowest Priority (TOTAL: 29s)
30202	High + extreme wide angle	TBD	King Sweyn Forkbeard	15s	Cut to	Sweyn hearing the news on the beach		“Sweyn, who had no interest of peaceful relations with the English beforehand, having raided England in the 990s and accomplished a raid on London in 994, had now become furious with the news he had realised and orders a full scale retaliation on the English for what Æthelred had done.”	<b>X</b>		
30401	Medium close-up	TBD	King Sweyn Forkbeard	6s	Cut to	Sweyn giving orders from his hall		“In 1003, Sweyn had ordered immediate campaigns to devastate areas in East Anglia and to have Norwich burnt to the ground. [...]”		<b>X</b>	
30501	Low + wide angle	TBD	King Sweyn Forkbeard	6s	Cut to	Sweyn giving orders from the beach		“In the years that came, Sweyn ordered persistent raids on England between the years of 1007-1012 [...]”	<b>X</b>		
30601	Establishing shot	TBD	Boats arriving and army marching	10s	Cut to	Sweyn arriving in England and moving in-land		“Finally deploying his fleet in Sanwich in 1013, Sweyn advances his army north, forcing Æthelred to flee to Normandy.”	<b>X</b>		
30701	Medium shot	TBD	King Sweyn Forkbeard	10s	Cut to	Sweyn being crowned		“On Christmas day in 1013, Sweyn is crowned the first Danish king of England shortly before passing away on the 3rd February 1014.”	<b>X</b>		

# St Brice's Day

# CHARACTER CONCEPTS

FRIDAY 23.01.26

## Rough visual look for characters

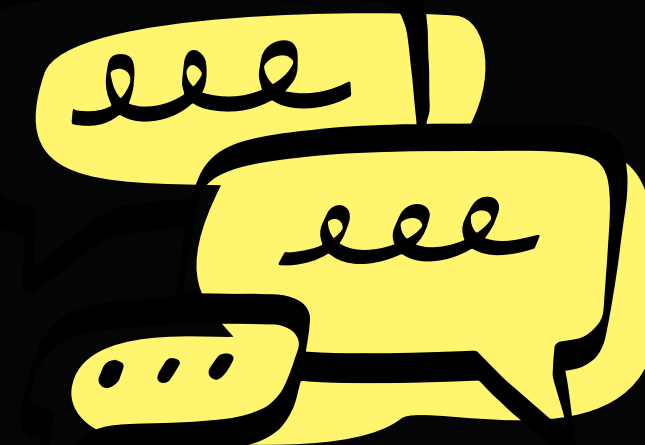
**Grace** - I am currently drawing out storyboards so you can expect to see these somewhere on this presentation as I go. *Please could you refine these characters' shape language and come up with some designs for different symbolisms.*

characters/symbolisms I'm after:

- Horse
- Danish & Anglo Saxon townfolk
- Danish blacksmith
- Anglo Saxon wagon driver
- Danish warriors & Anglo Saxon soldiers
- Gunhilde, Sweyn Forkbeard's sister
- Pallig Tokesen, Gunhilde's husband, Danish ealdorman
- King Æthelred the Unready
- King Sweyn Forkbeard

\*if you're experienced with modelling in Maya, it would be an enormous help if you could eventually help me generate these as 3D assets, but no pressure on you to if this ain't your cup of tea :)

once you've read this, have a think about whatever you may need to ask me on Tuesday, or on Teams if else :)

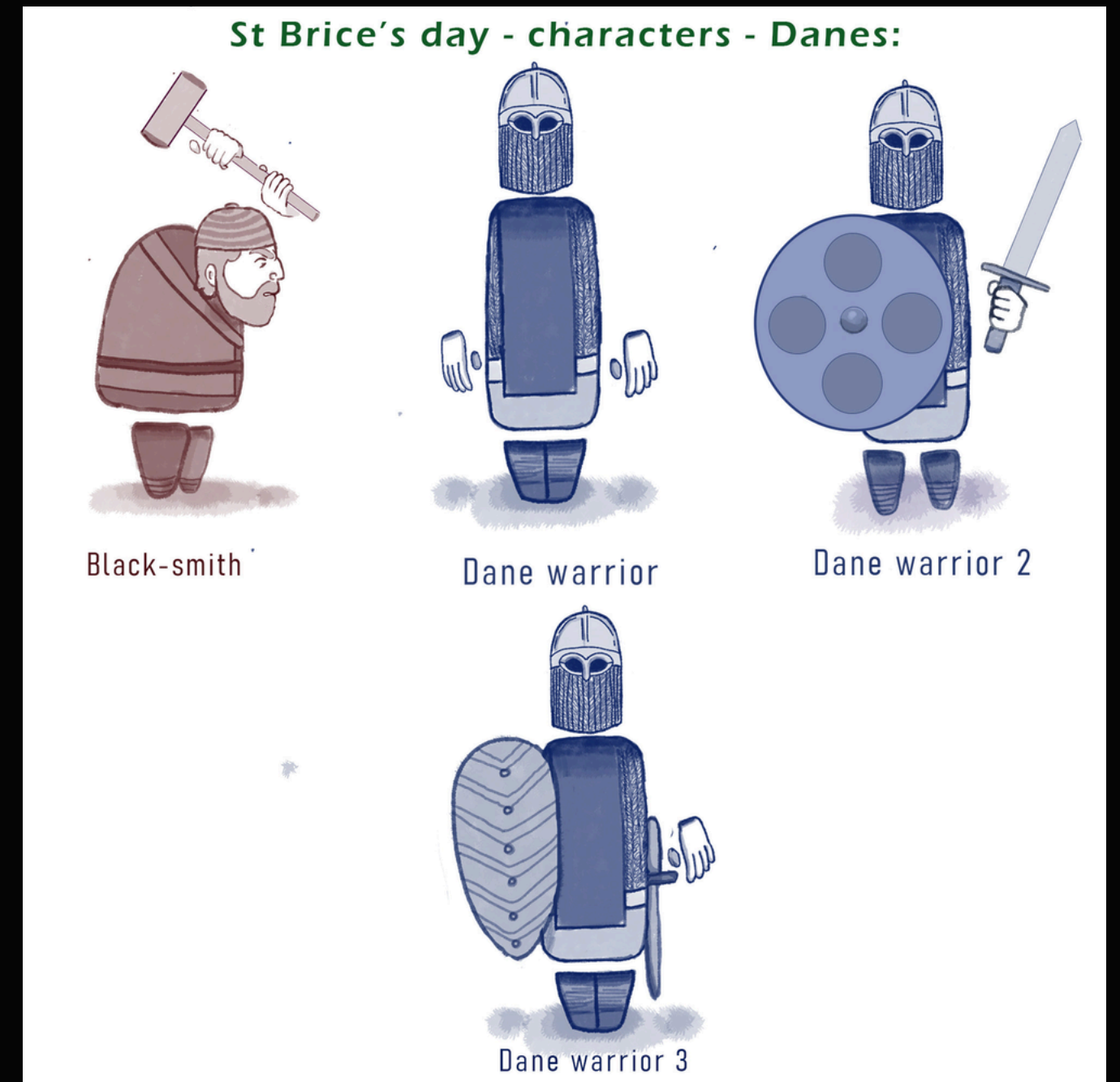
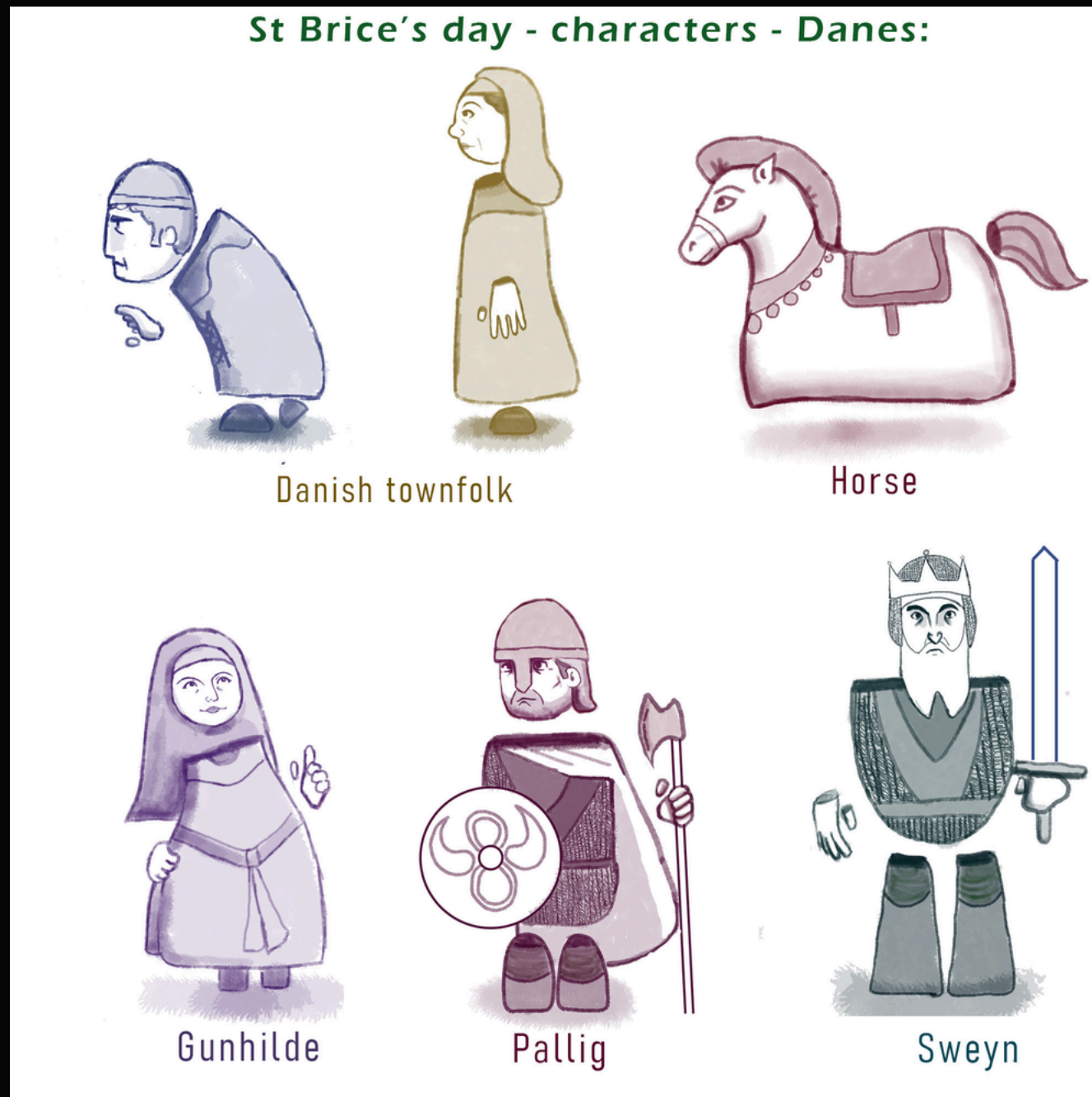


# CHARACTER CONCEPTS

My messages  
Grace's messages

## Grace's Designs: The Danes

“Hi Rufus, I'm just sending over some of the character designs for your FMP as agreed upon. Please let me know any changes you would like to make and I can edit them accordingly. It would be good to hear your thoughts before proceeding with the rest so I know what elements to continue with or cut out.”

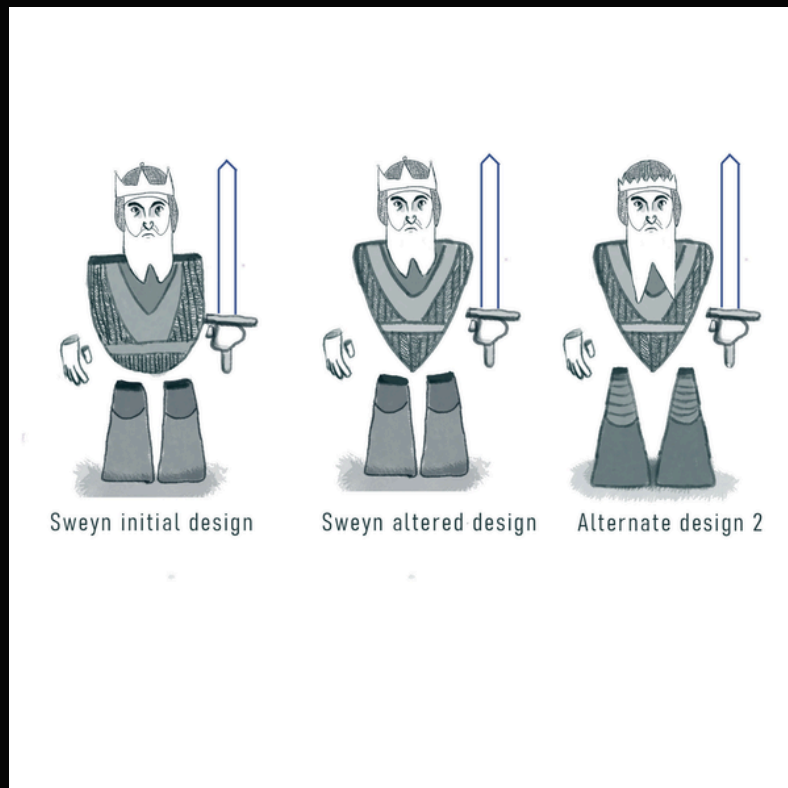


# CHARACTER CONCEPTS

My messages  
Grace's messages

## Grace's Designs: The Kings

"could you try and make Sweyn's torso more pointy? More like a triangle basically, so that rounded bottom- try and keep that the tip of the triangle.. if that makes sense? It should be overly-obvious which characters are the kings"



"Hi Rufus, I have made the changes to Sweyn and have included a page where it shows his original design, the alterations you mentioned and then a more angular approach. I have also included the Danish warriors and blacksmith designs:"

"Now I'm torn.. I do like the kinda poncho shape in the initial design but the altered ones do have a more contrasting silhouette..."

I think I'm more fond of your initial design for Sweyn, however, maybe the pointier design can be used for Æthelred..? Shows a detachment from his own people perhaps...

Love the Danes, super funny... Blacksmith is just how I pictured him"

"Thank you. For Aethelred we can definitely incorporate those geometric shapes! Looking at **the depiction of him in your concept booklet his silhouette appears to have quite a square/ large head.** We could always make his character look a little more unbalanced compared to Sweyn, which could link to your idea of him being more detached and out of sync? His crown also looks more of a banded/ plain shape so if we use that depiction, it could make him look less imposing than Sweyn? What do you think?"



"I like your thinking... **Envisioning a sort of enlarged & raged headshape like the Queen of Hearts from Alice in Wonderland** haha!"

I am fond of the idea of using the banded / plain shape design as seen in the later depiction of Æthelred wearing a diadem - reinforces the lassitude of his rule and compliments the square-ish style of the Anglo Saxons.

I'll leave it up to you whether you'd like to adapt the crown in your own style, incorporating design elements from these images - or if you think the plain look is more appealing I'd happy with that too"

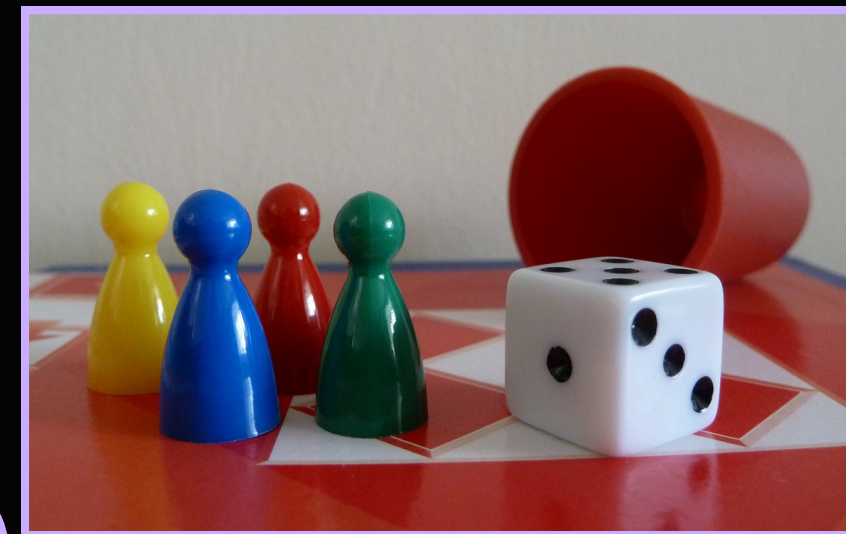


"the first coin represents what crowns were most fashionable with Æthelstan's rule from 924-939

whereas the second coin shows us what Æthelred II wore before he decided to wear a more plain-looking crown from 1003-1009 following the events of the massacre in 1002

ultimately, the goal is to have one characterisation of each figure, so I'd be happy to see either a more ostentatious and boasting style of crown or equally a crown that is absolutely lacklustre

the phrase Æthelred kicked around as a description for Danes living in England in 1004 was a biblical reference... "cockle among the wheat". You may use that phrase if you wish to understand his character"



"These are some useful insights into the character! I can make a variety of designs for Aethelred based on the elements you mentioned, eg. his design with the accurate crown prior to the massacre and also one with the plain crown. That way you can decide what would be the most appealing for your vision of the project?"

"In response to how much detail I'm after, precise detail is not so important. Things like faces or any other minute details aren't essential. **Think player pieces from Ludo**"

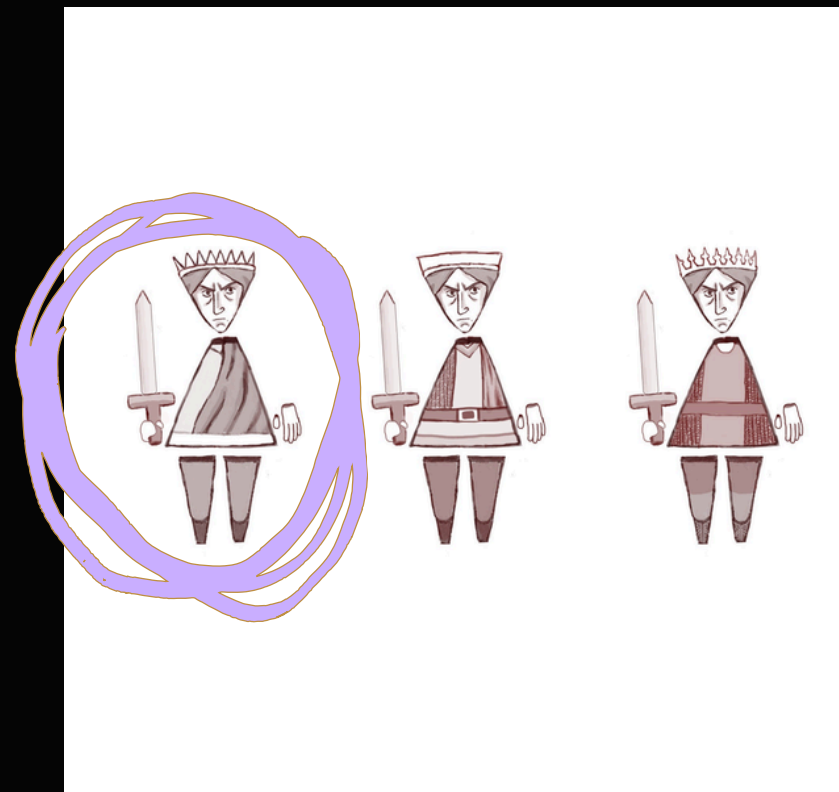
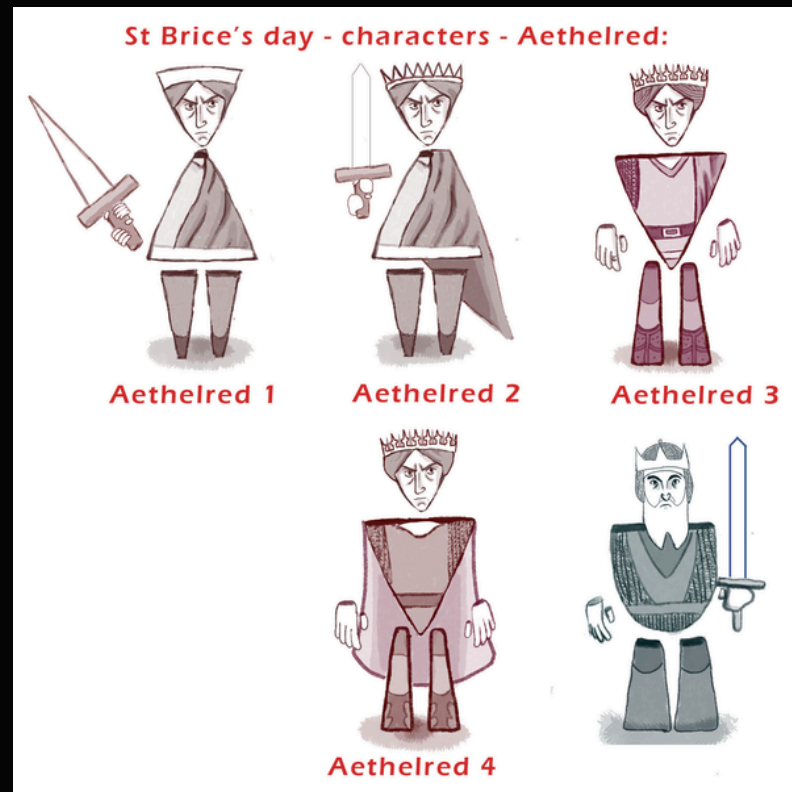


# CHARACTER CONCEPTS

My messages  
Grace's messages

## Grace's Designs: The Kings

"I like Æthelred 1 + 2, the shape gives him a bit of a blubber belly and small feet which compliments his personality really well! Could I ask to see what Æthelred 2 looks like without the cloak, as depicted in Æthelred 1?"



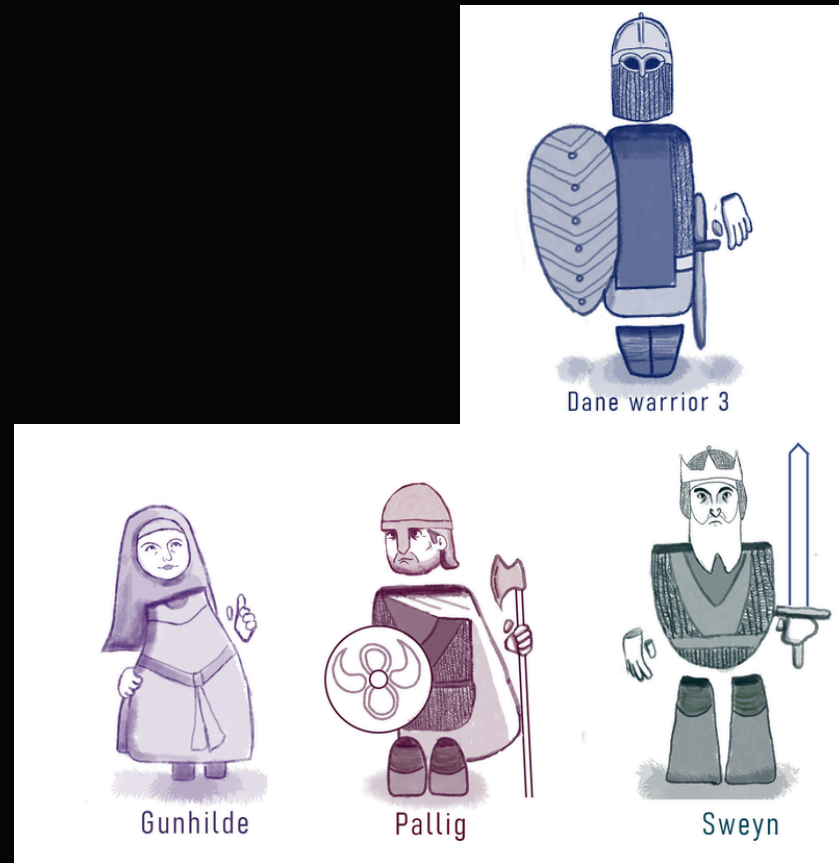
"Hi Rufus! I've done a few sketches of Aethelred if you want to take a look. Based on the notes from our previous discussion I've leant more into the triangular design that you mentioned and based it mostly on the depiction that is on the concept document. Let me know if there are any changes you want to make (Sweyn is on there for comparison purposes to see how they could look together)"

"Yeah sure! Here you go: I've included a little variation on the crown shapes etc."

"Yes! I like the first one a lot"

# 3D CHARACTER MODELS

Tom's Designs:  
The Danes

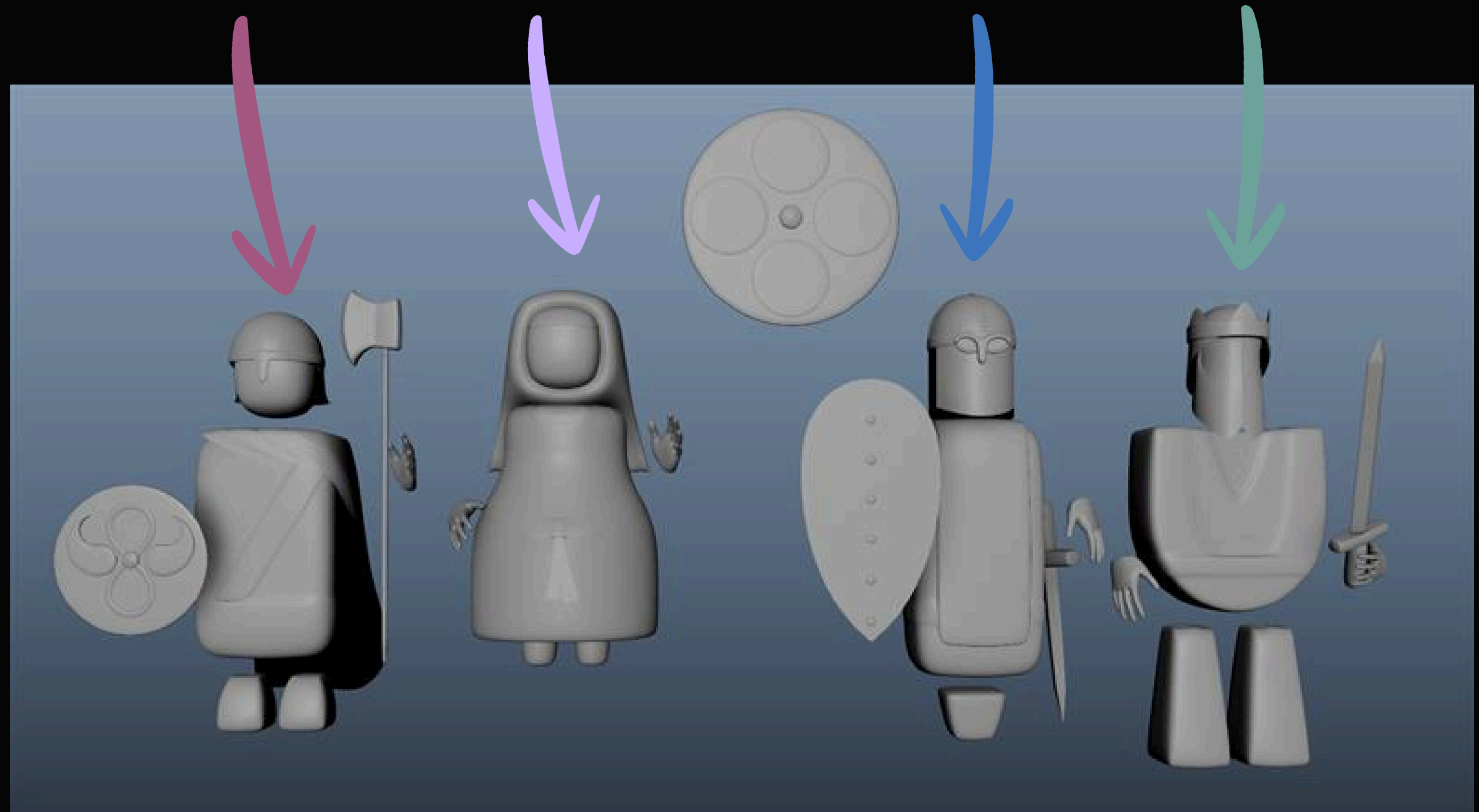


Pallig

Gunhilde

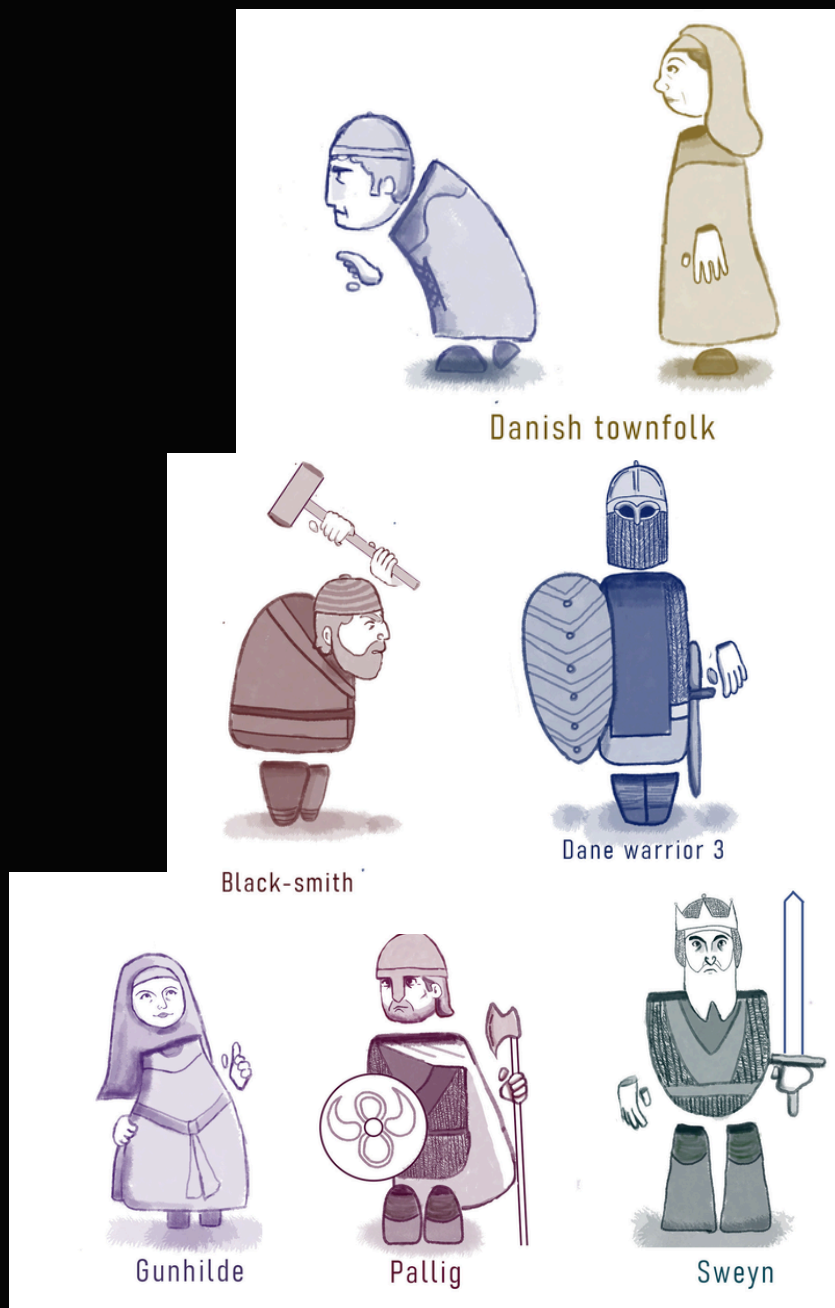
Dane Warrior 3

King Sweyn Forkbeard

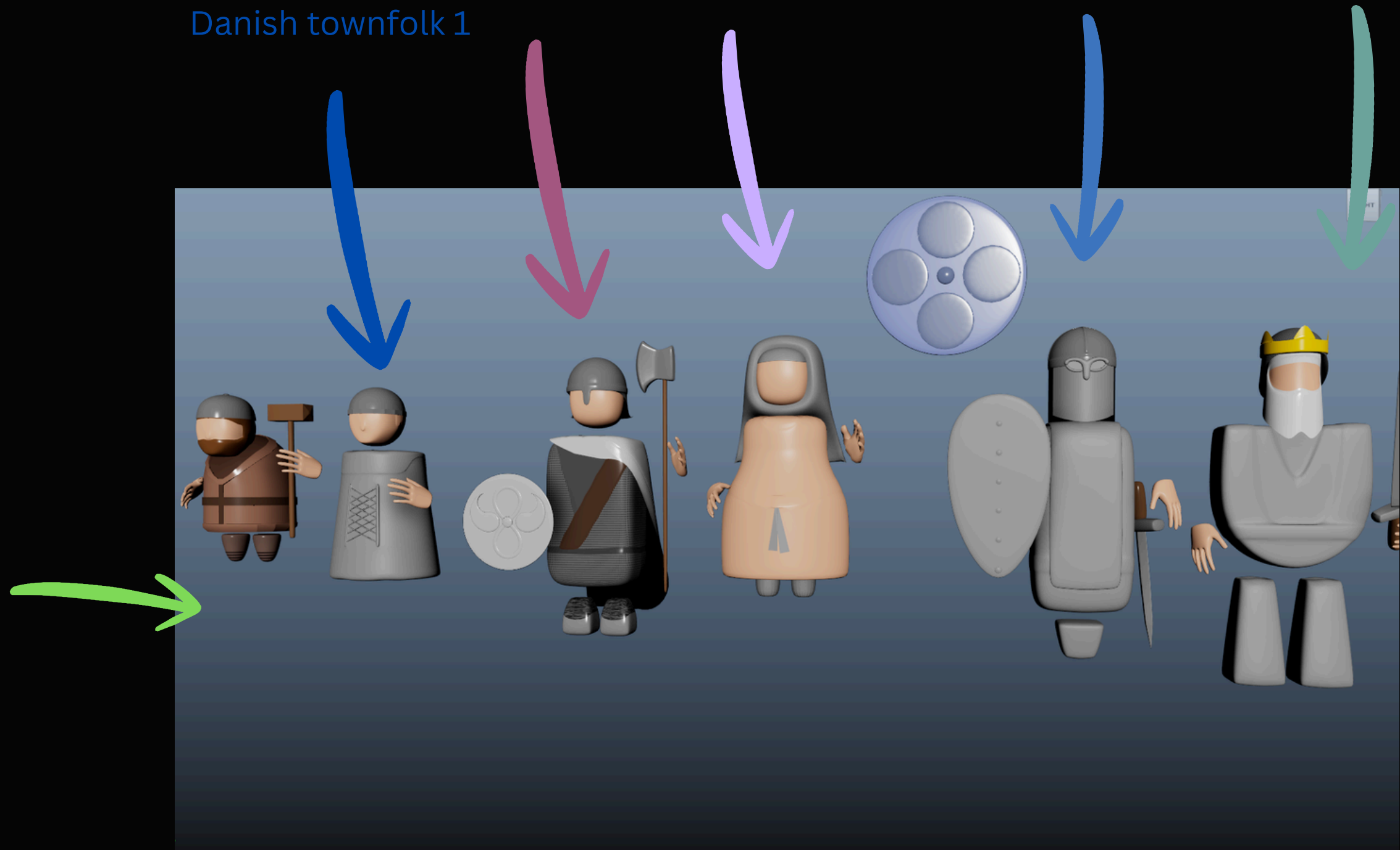


# 3D CHARACTER MODELS

## Tom's Designs: The Danes



Danish townfolk 1      Pallig      Gunhilde      Dane Warrior 3      King Sweyn Forkbeard



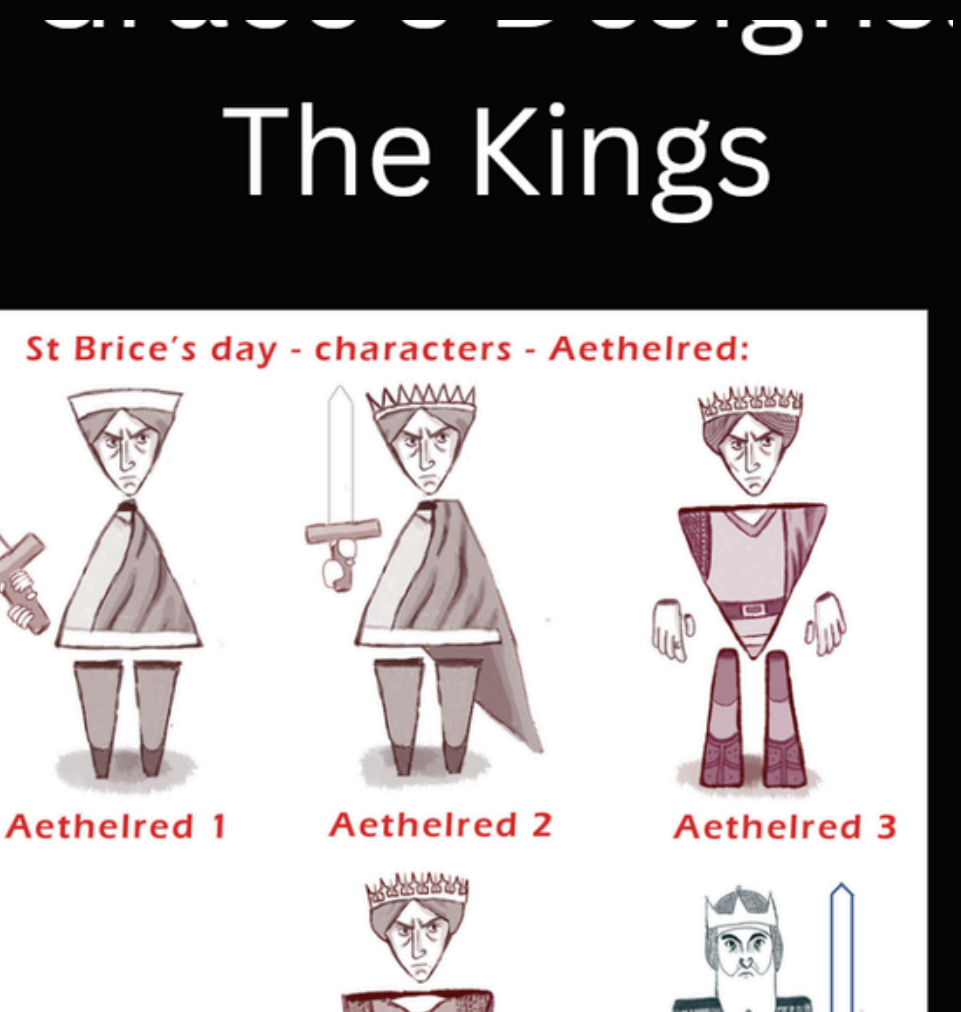
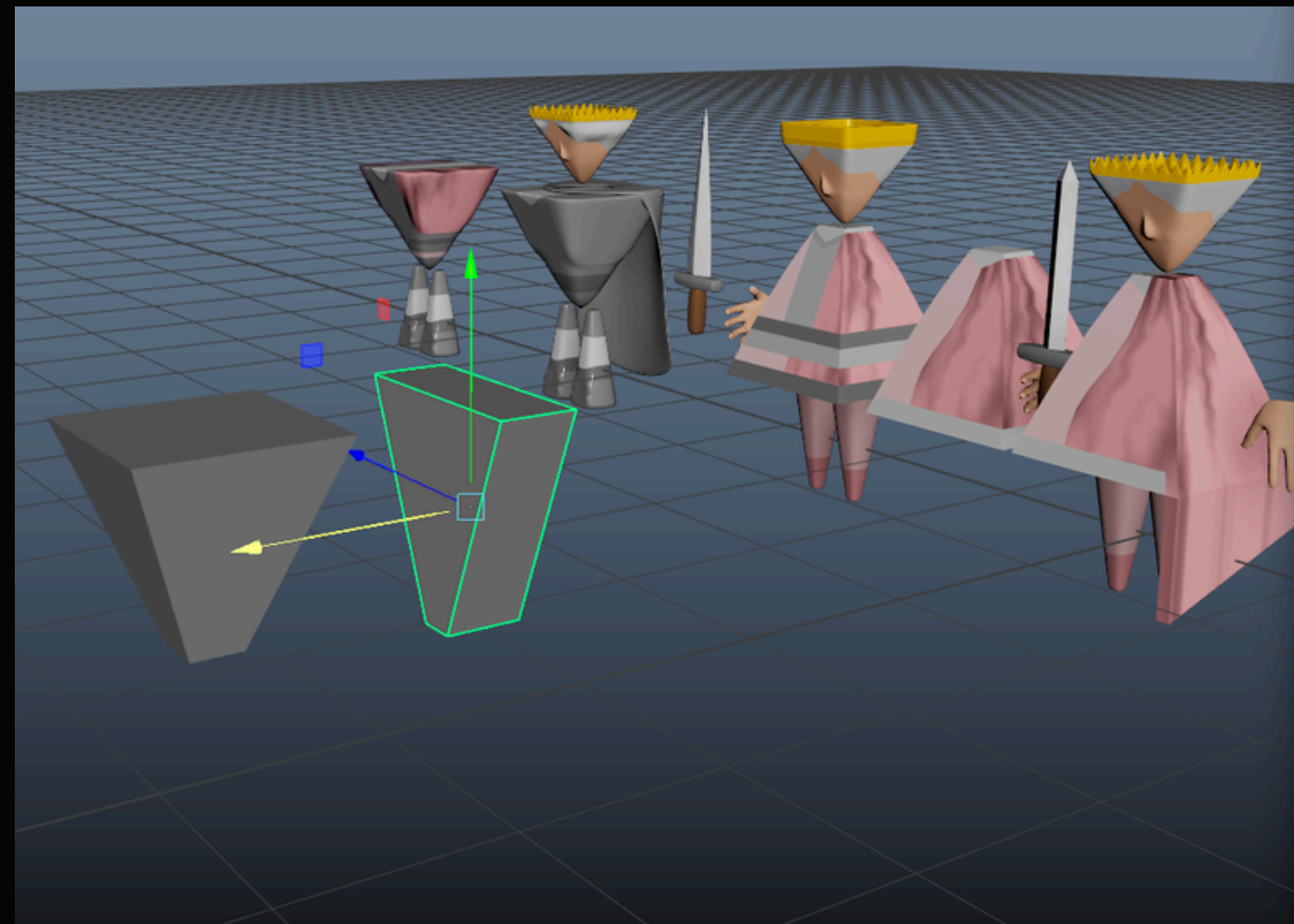
# 3D CHARACTER MODELS

Tom's Designs:



# 3D CHARACTER MODELS

Tom's Designs:  
Æthelred II



# MUSIC

## FRIDAY 23.01.26

**Sam** - *Please take the time to have a look through this document over the coming days to get an idea of what kind of music you can start cooking up.*

For overall context, this project is a 3D **previsualisation\*** for an abstract/stylised animated history video for the education sector. It's based on true events that happened during the St Brice's Day Massacre in 1002. With this project, I hope to touch on rising concerns over modern day decisions being made by men in power that put the lives of ordinary, innocent people in jeopardy.  
*(cough cough **Trump** cough cough)*

Once a script is complete, I can begin to deduce how much time a certain motif should last (if that's the right terminology) based on the corresponding shots on screen at certain timeframes.  
Expect the script to be complete no later than the 27th.

For now, feel free to use the reference tracks I sent you to start coming up with something but I do encourage looking into other sounds/music online that you think could inspire you to make something that's a good fit for this :)

Also, I am open to continue using Instagram going forward for communication, or if you'd prefer Teams, you can reach me there using my email: 97354222@rave.ac.uk

*\*short video explanation*

<https://www.youtube.com/watch?v=EaSngSgit34>

